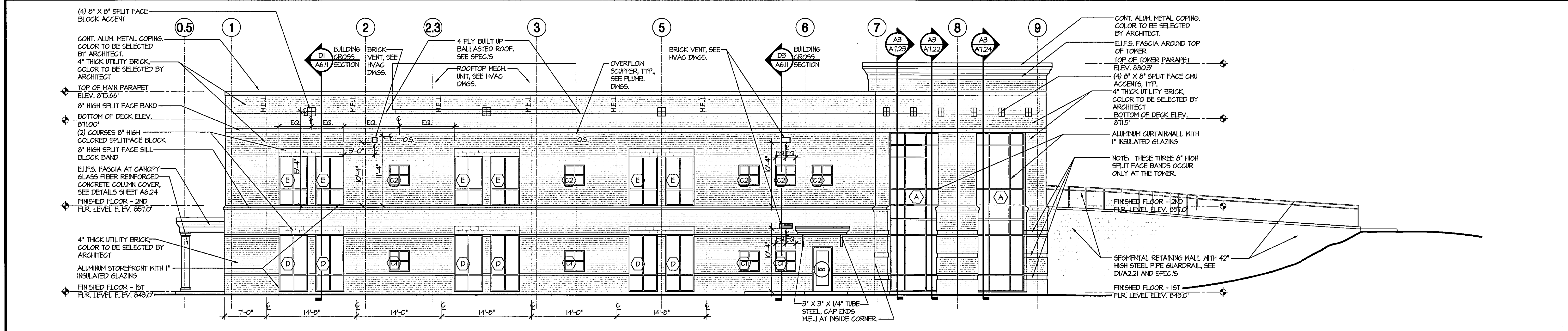
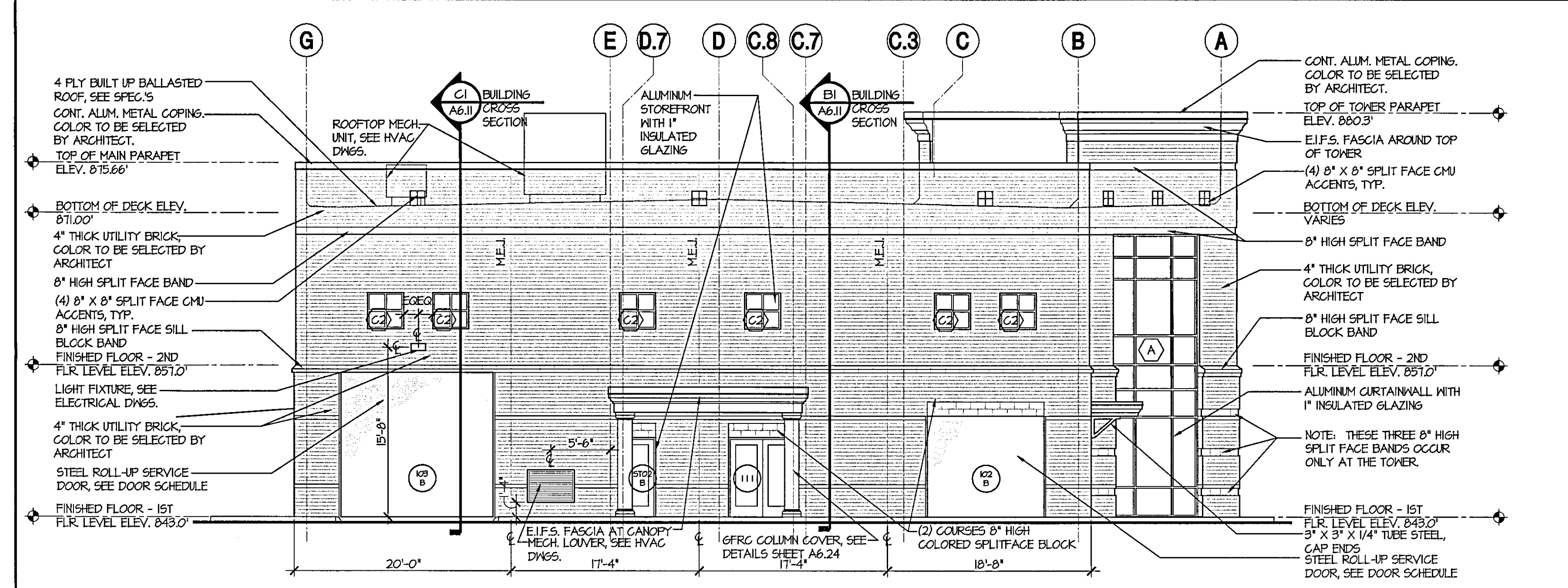
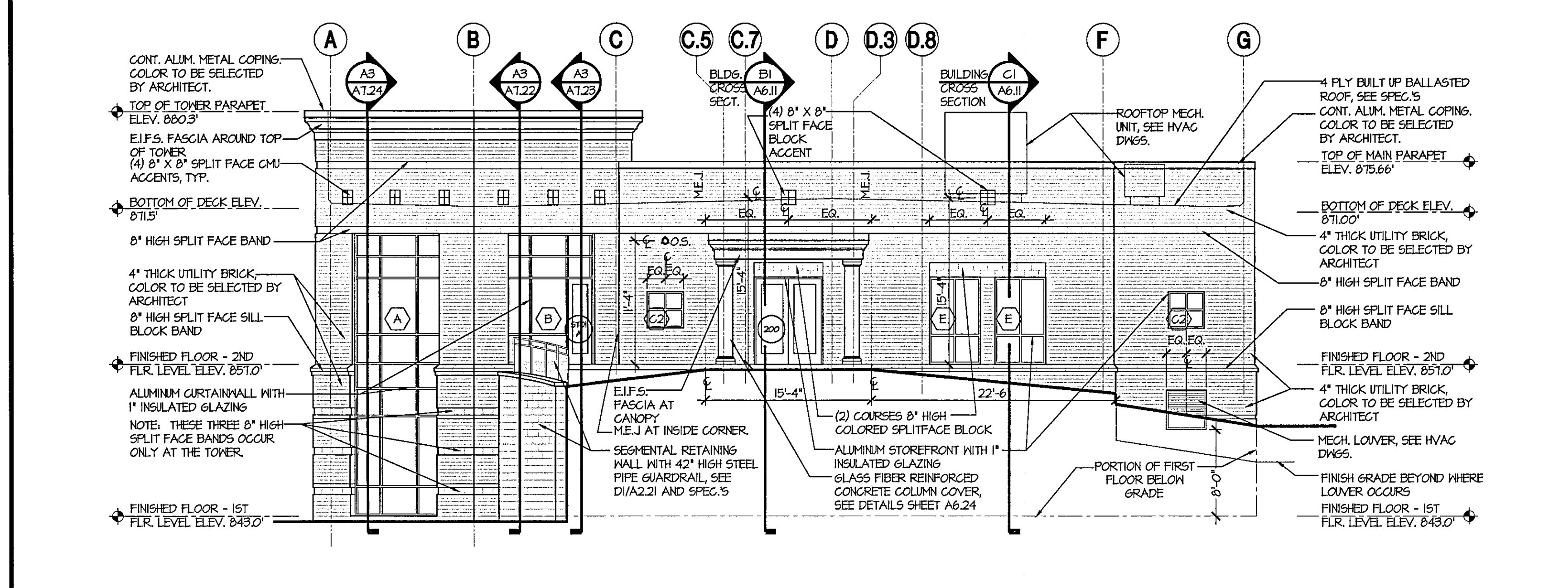


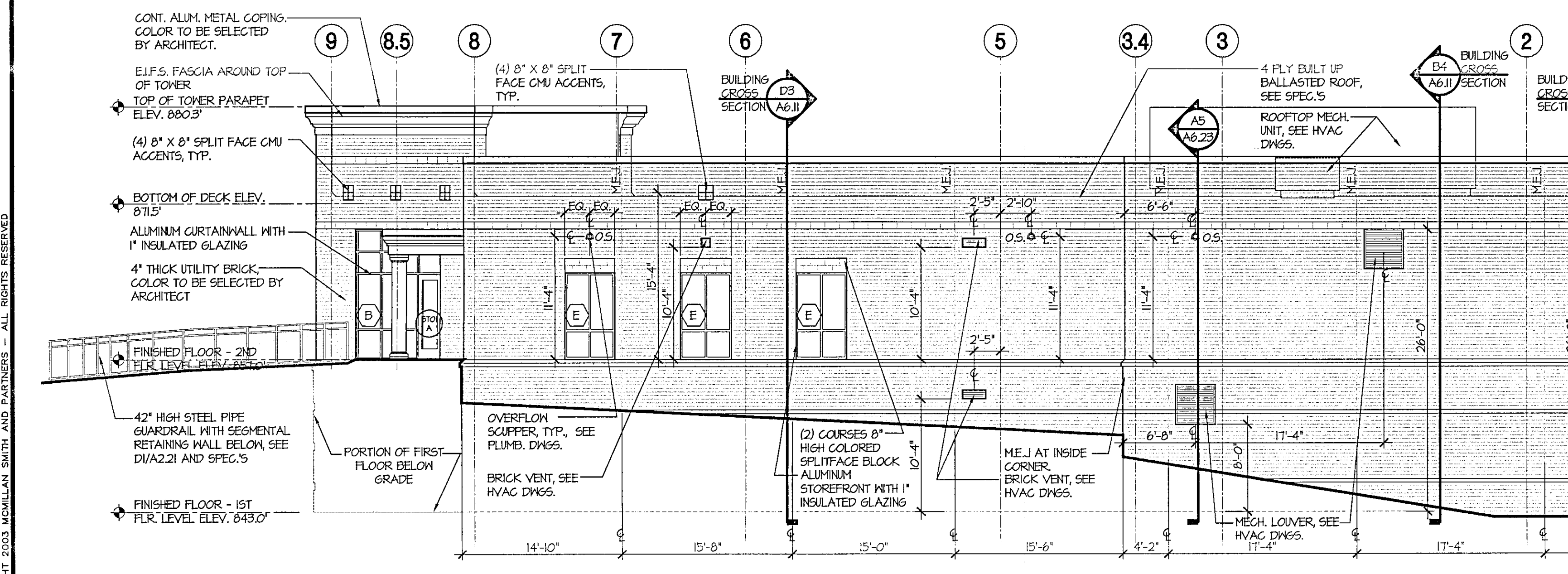
D1 1/8"=1'-0" DETAIL D2 1/8"=1'-0" DETAIL D3 1/8"=1'-0" DETAIL D4 1/8"=1'-0" DETAIL D5 N.T.S. KEY PLAN



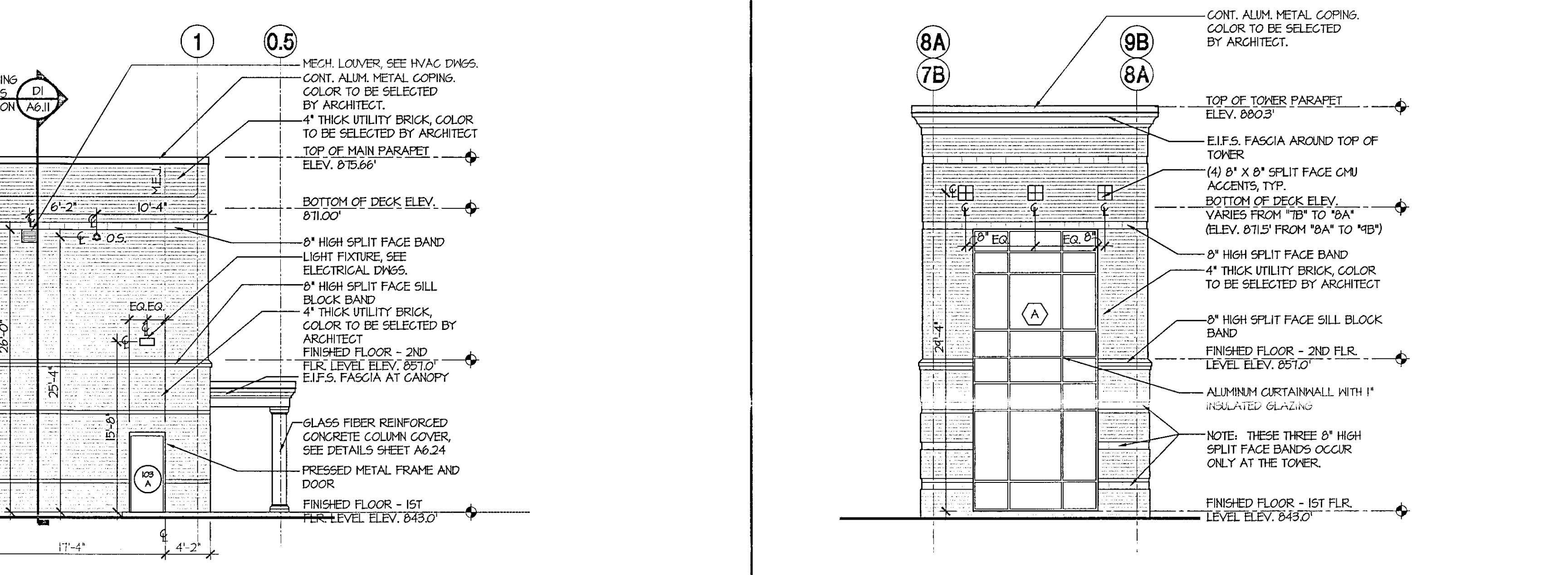
C1 1/8"=1'-0" EXTERIOR ELEVATIONS



B1 1/8"=1'-0" EXTERIOR ELEVATIONS



B3 1/8"=1'-0" EXTERIOR ELEVATIONS



A1 1/8"=1'-0" EXTERIOR ELEVATIONS



A4 1/8"=1'-0" EXTERIOR ELEVATIONS-TOWER



Spartanburg Technical College Foundation  
CHEROKEE COUNTY TRAINING FACILITY  
BUILDING PACKAGE  
State Project No. H59-N354-GW-B  
Gaffney, South Carolina

PROJECT NAME:

REVISIONS:  
NO. DATE DESCRIPTION BY

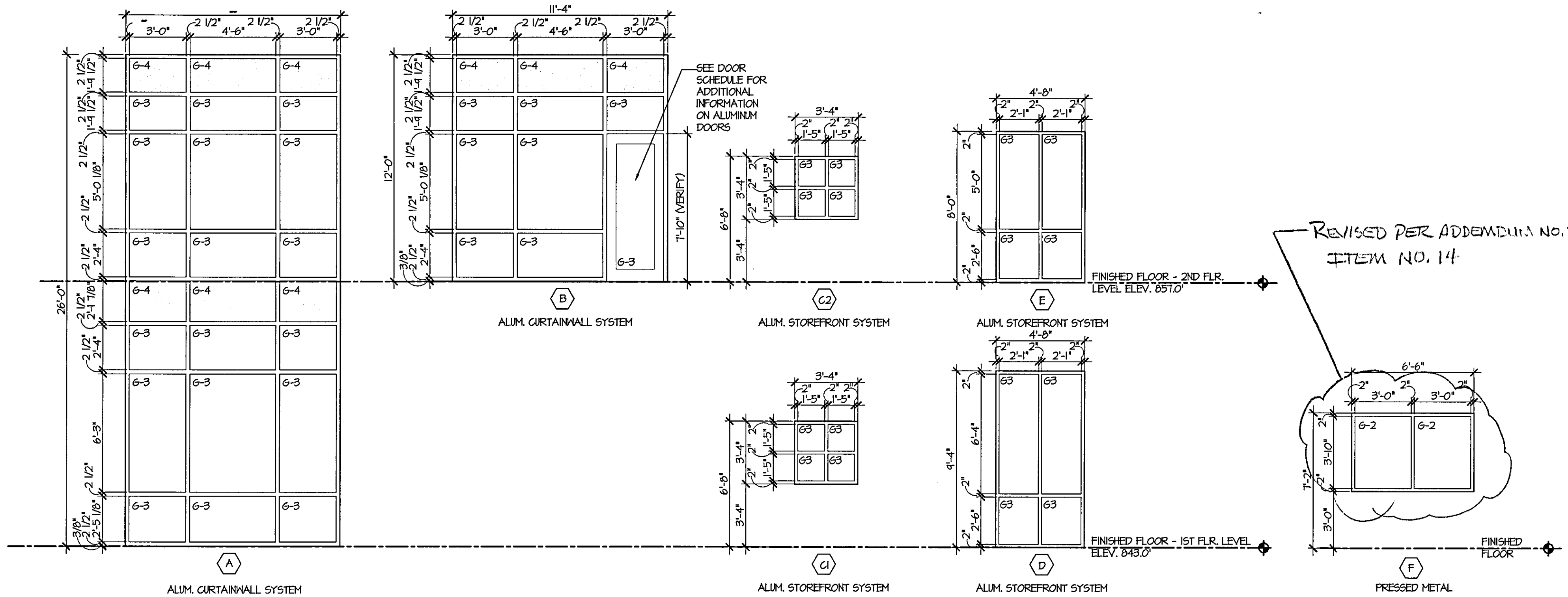
DESIGN PROFESSIONAL IN RESPONSIBLE CHARGE:  
DONZA H. WATTS, AIA  
03/10/06  
SUBMITTAL  
PRINCIPAL IN CHARGE: DHM  
PROJECT ARCHITECT: DHM, JSW

SHEET TITLE:  
EXTERIOR ELEVATIONS

SHEET NO. PROJ. NO.  
A5.11 05123

DATE: 03/10/06

SHT 8 OF 28



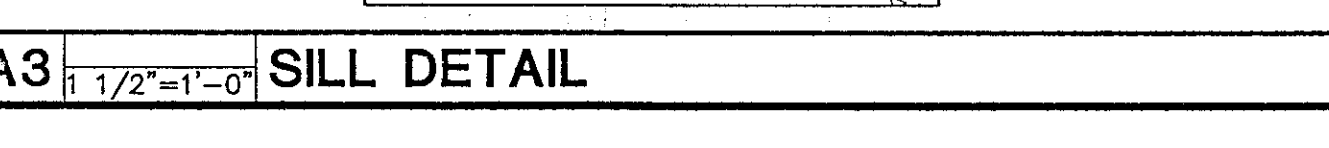
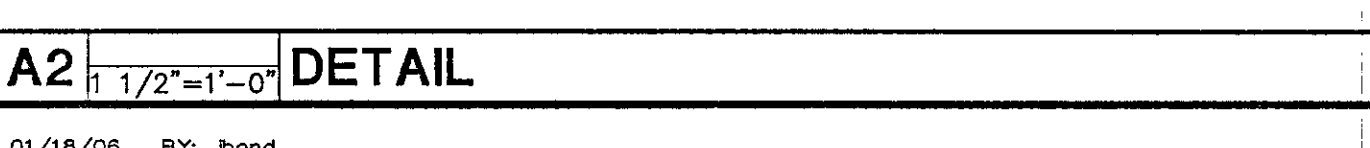
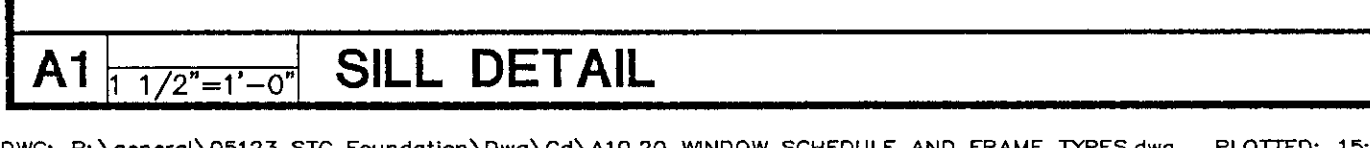
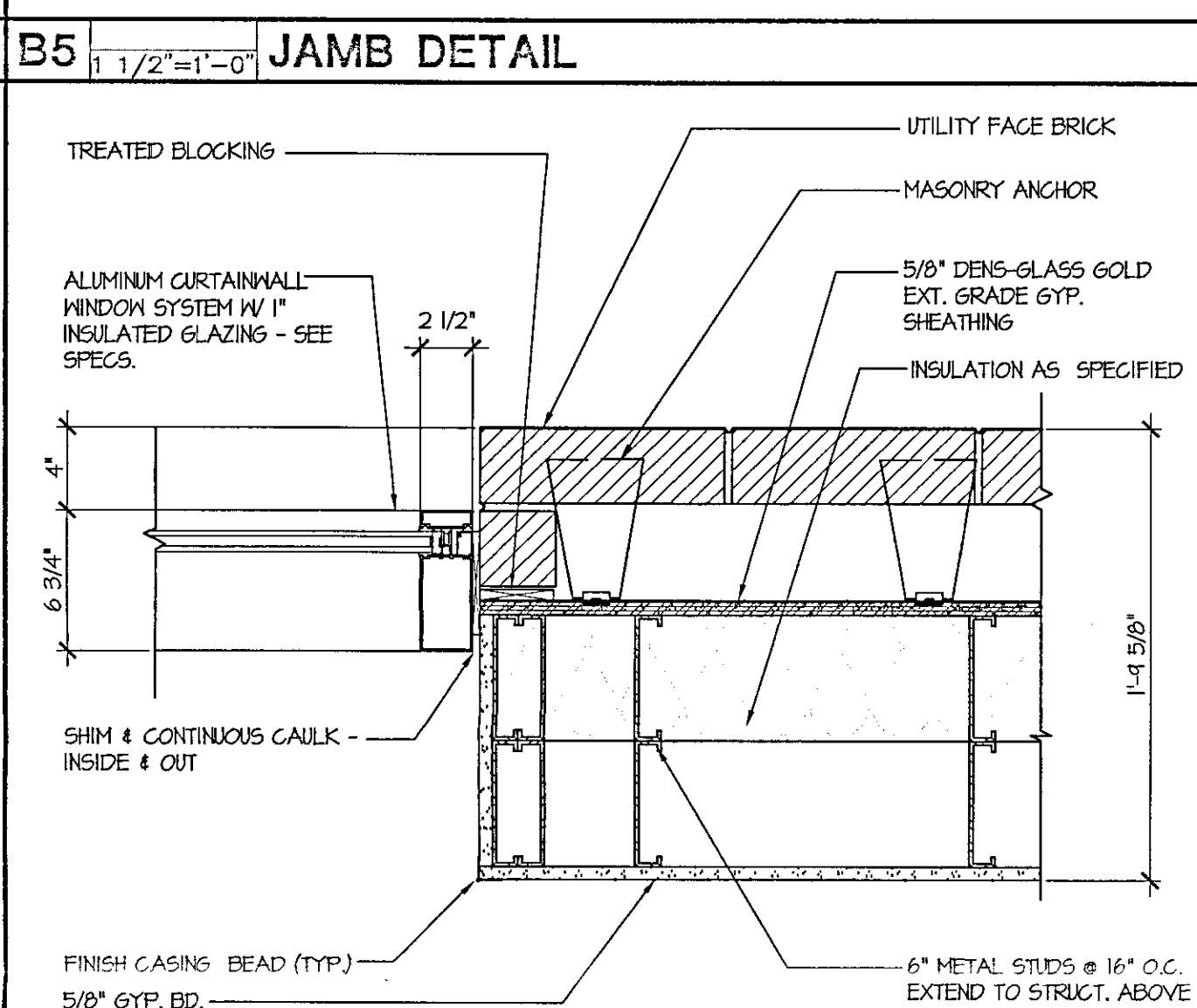
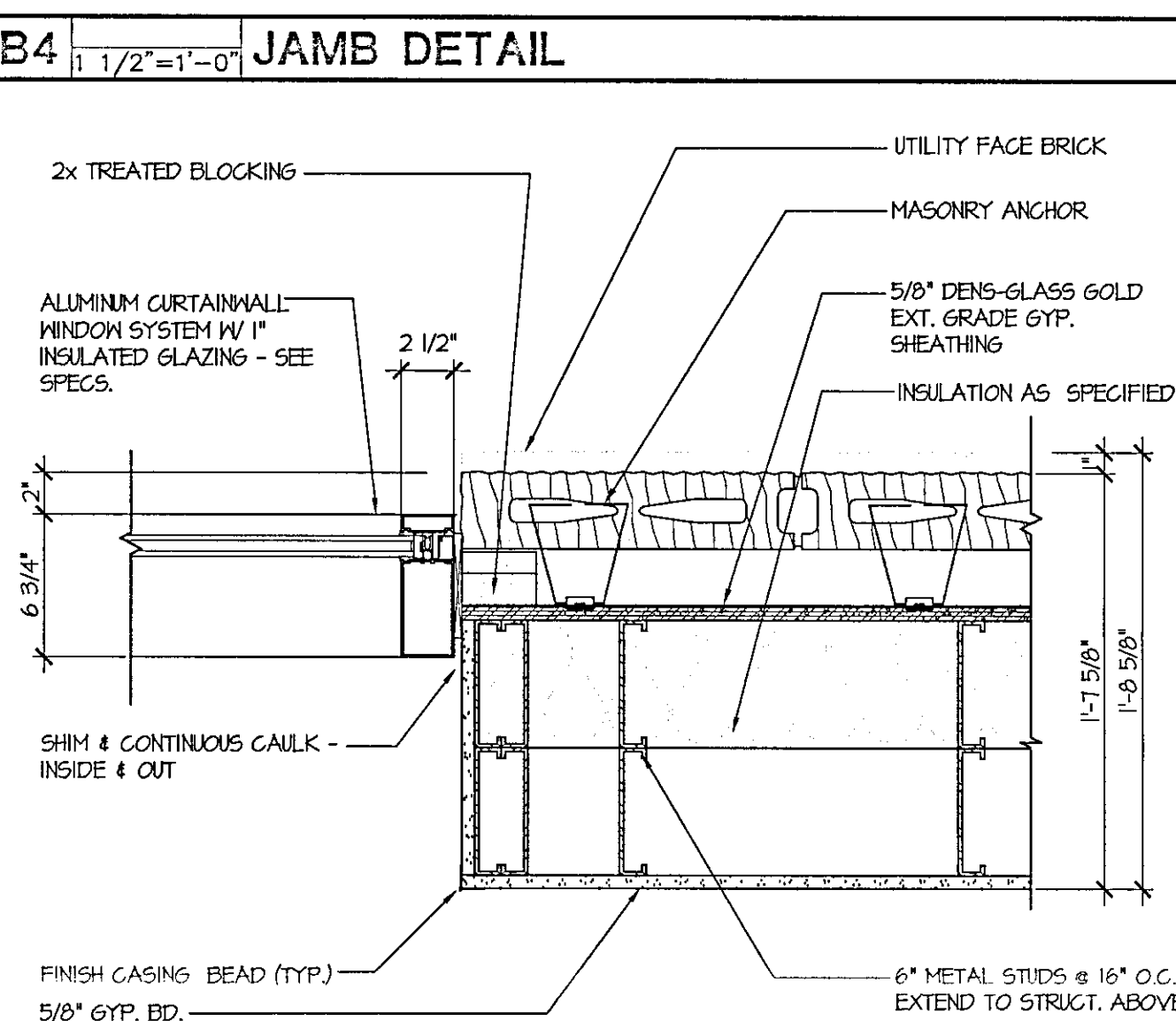
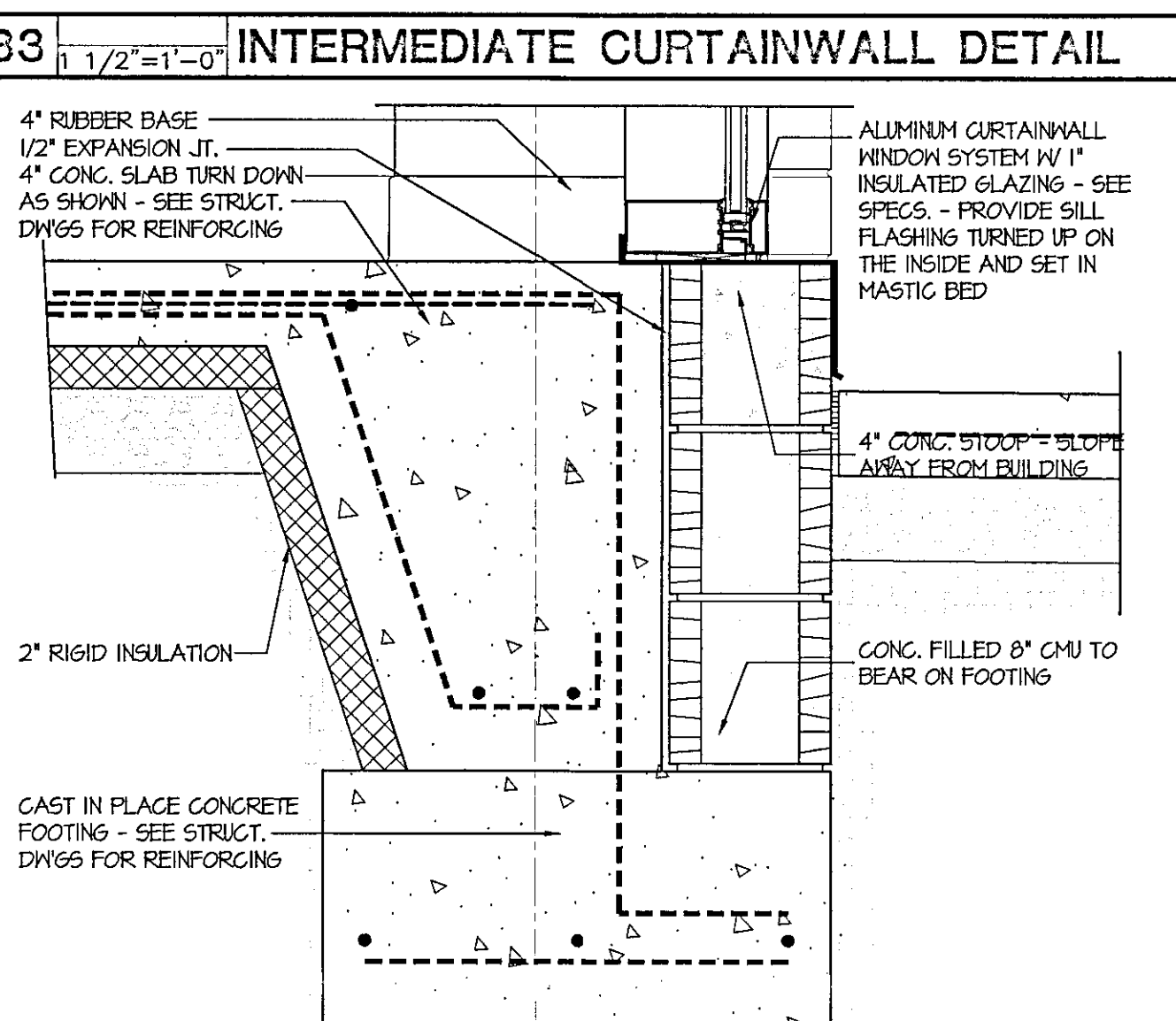
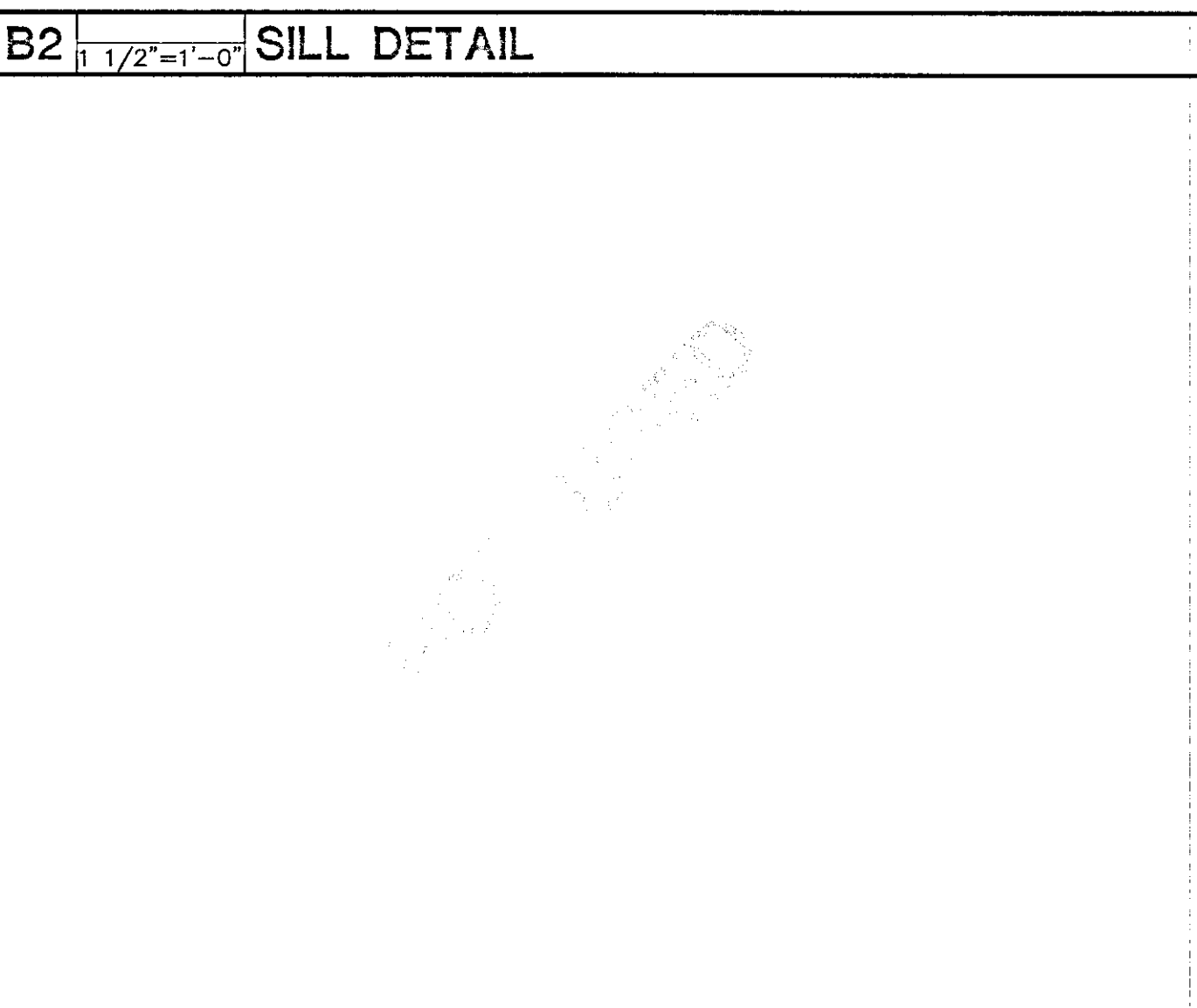
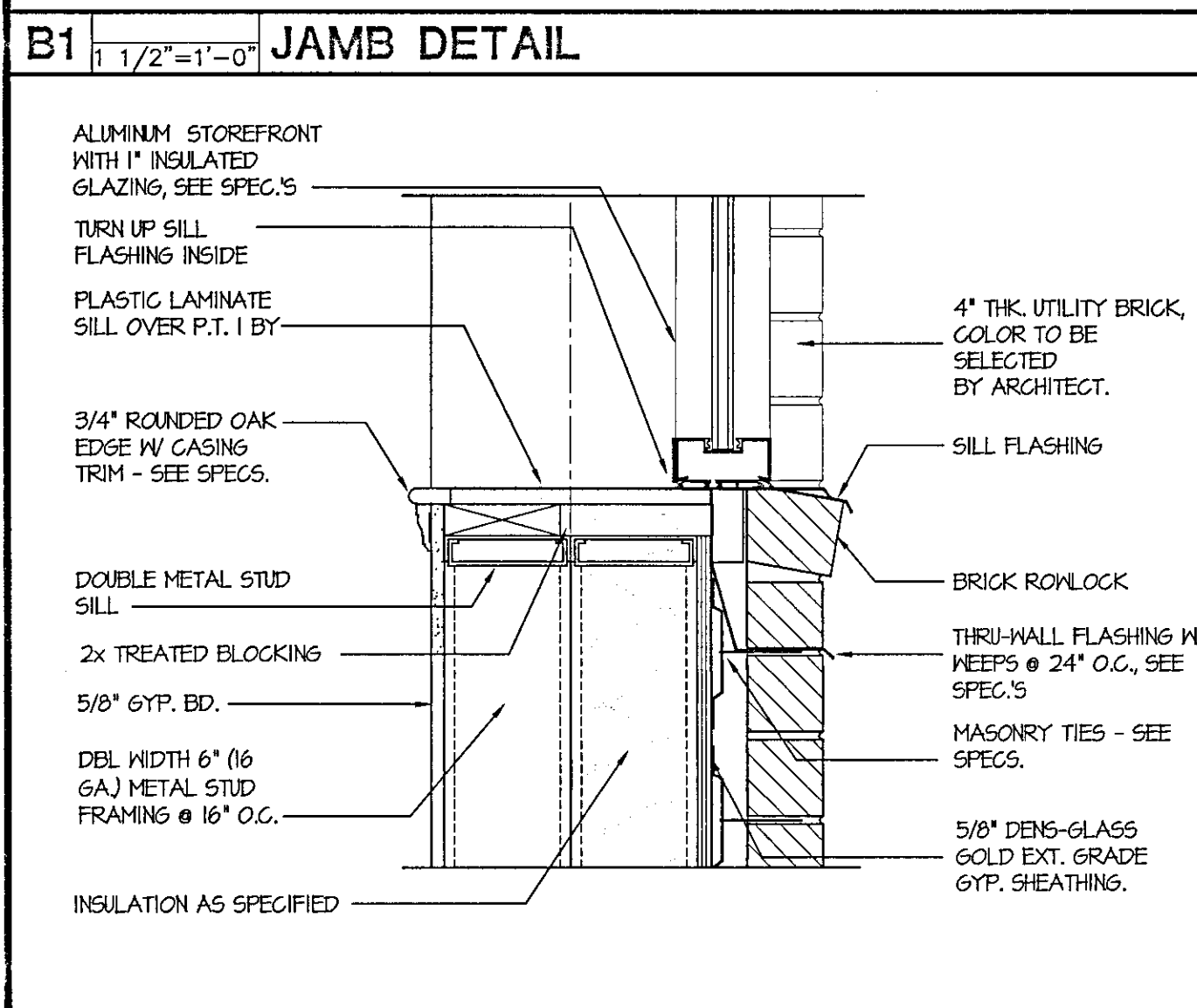
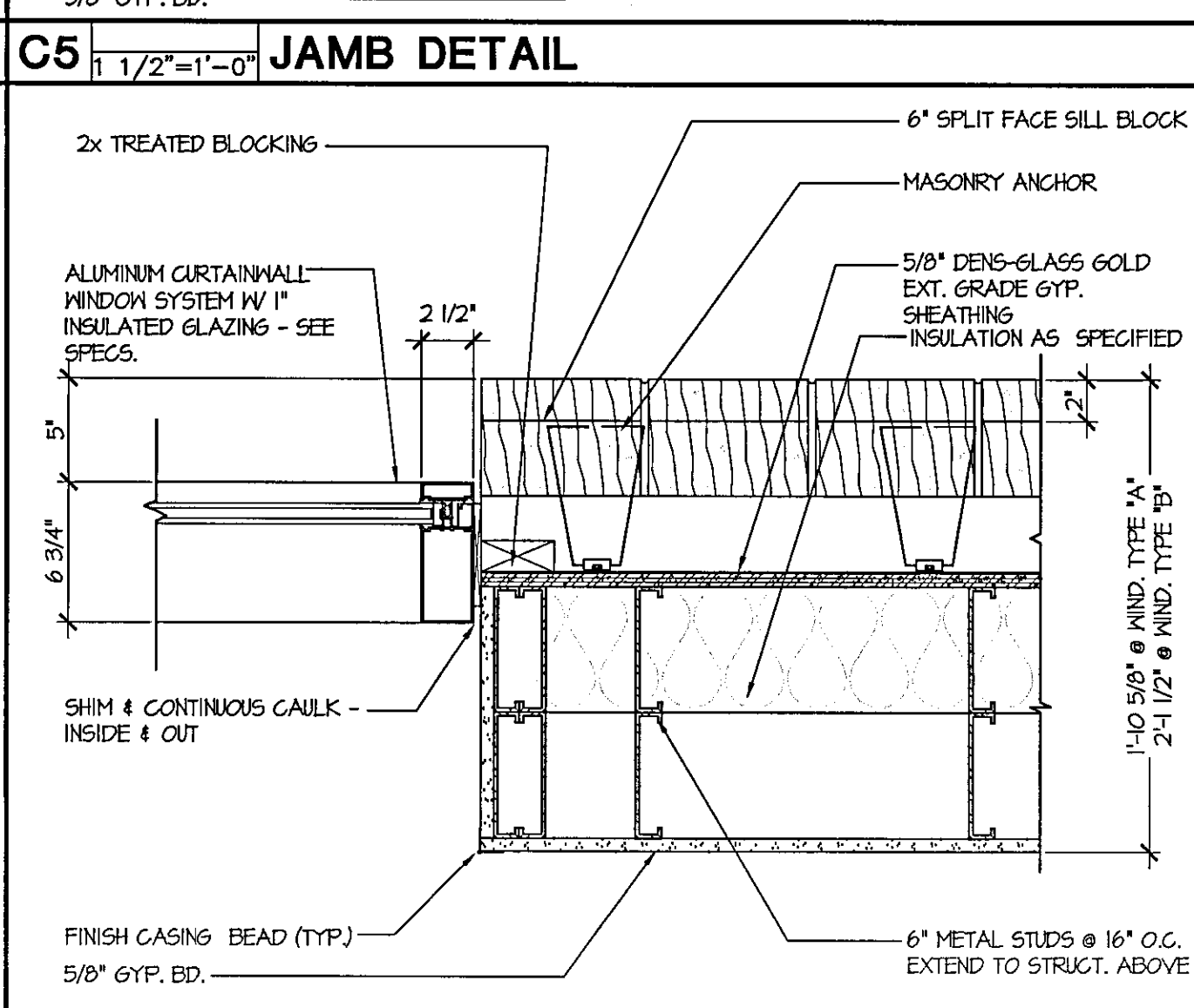
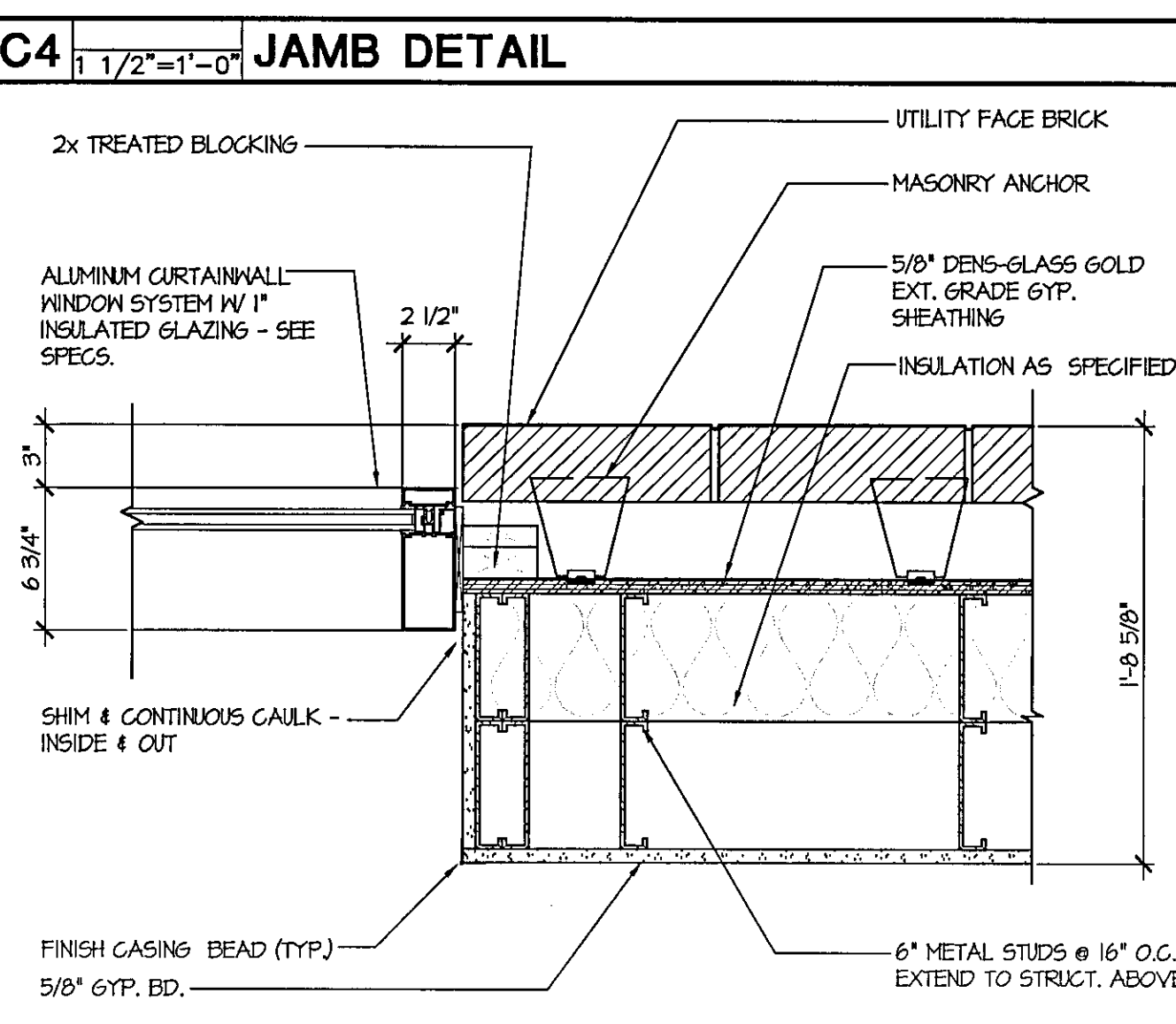
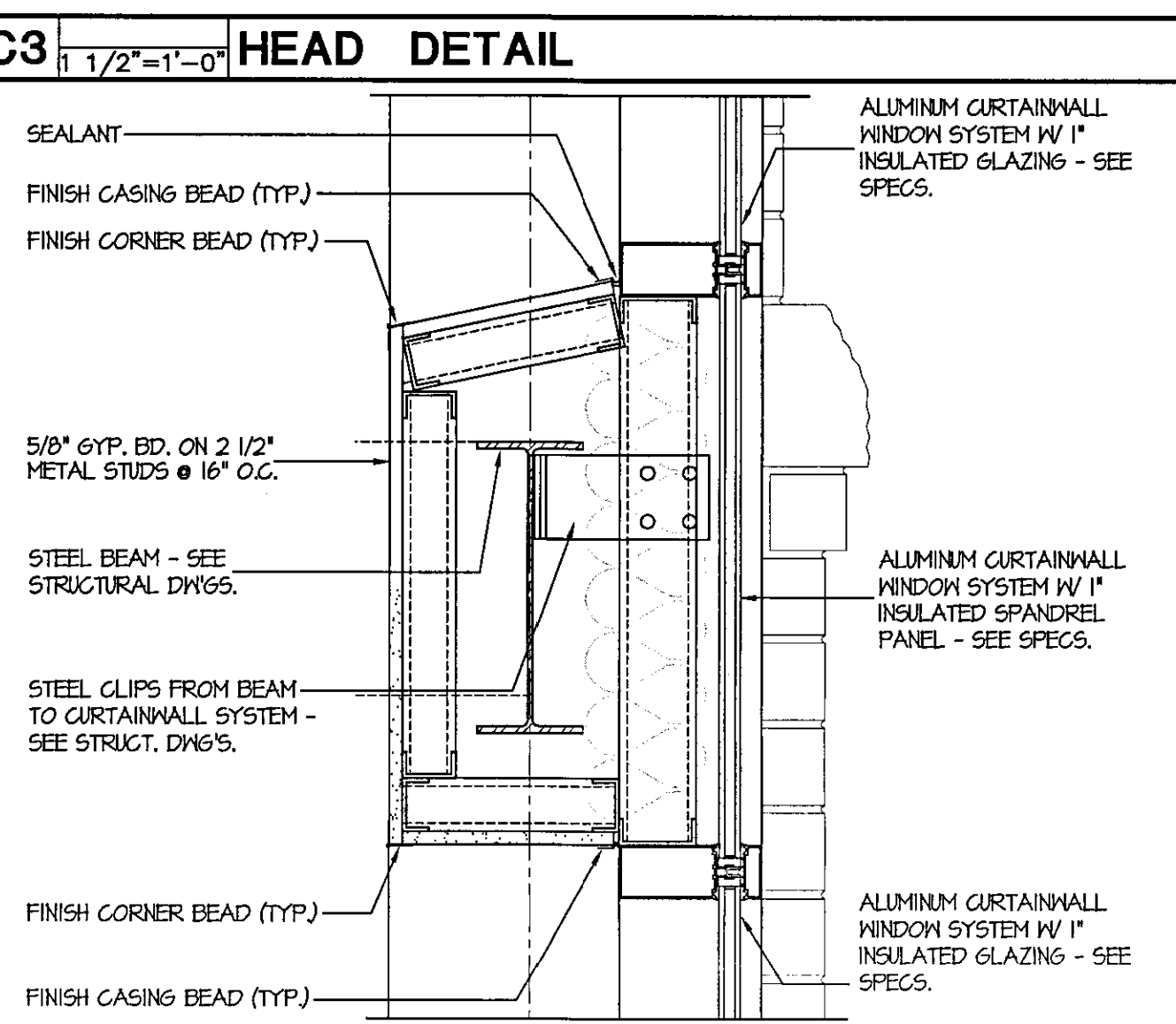
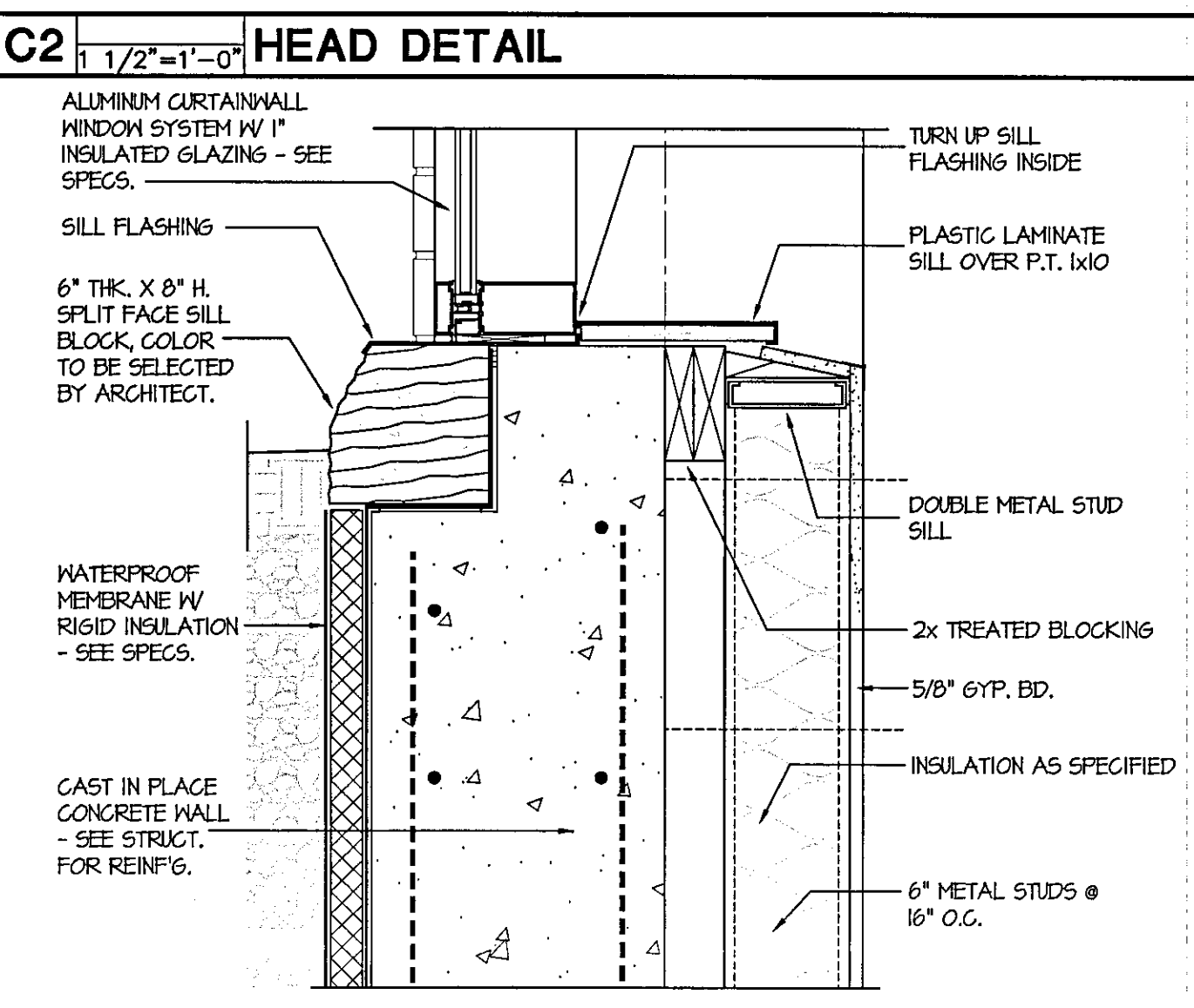
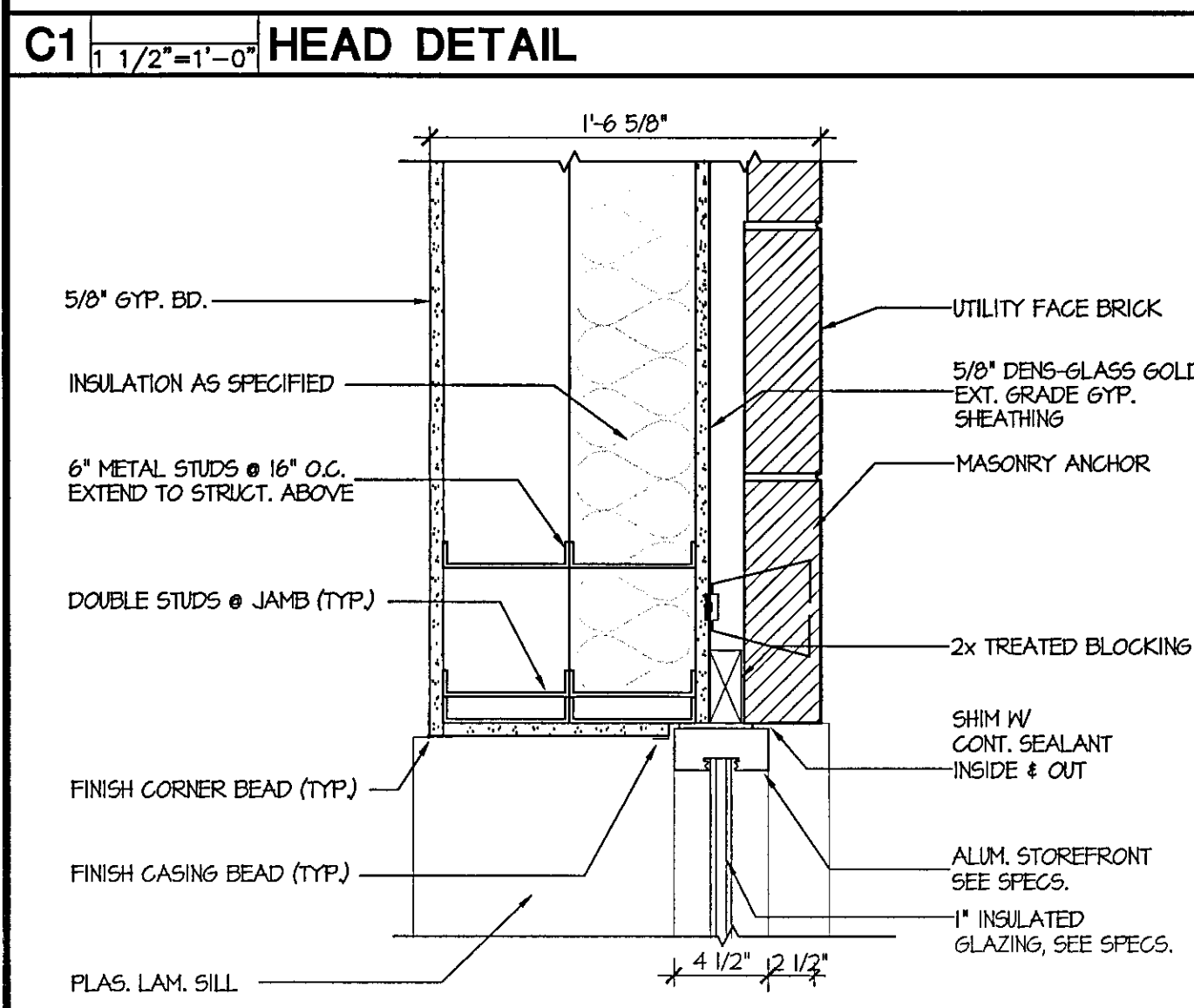
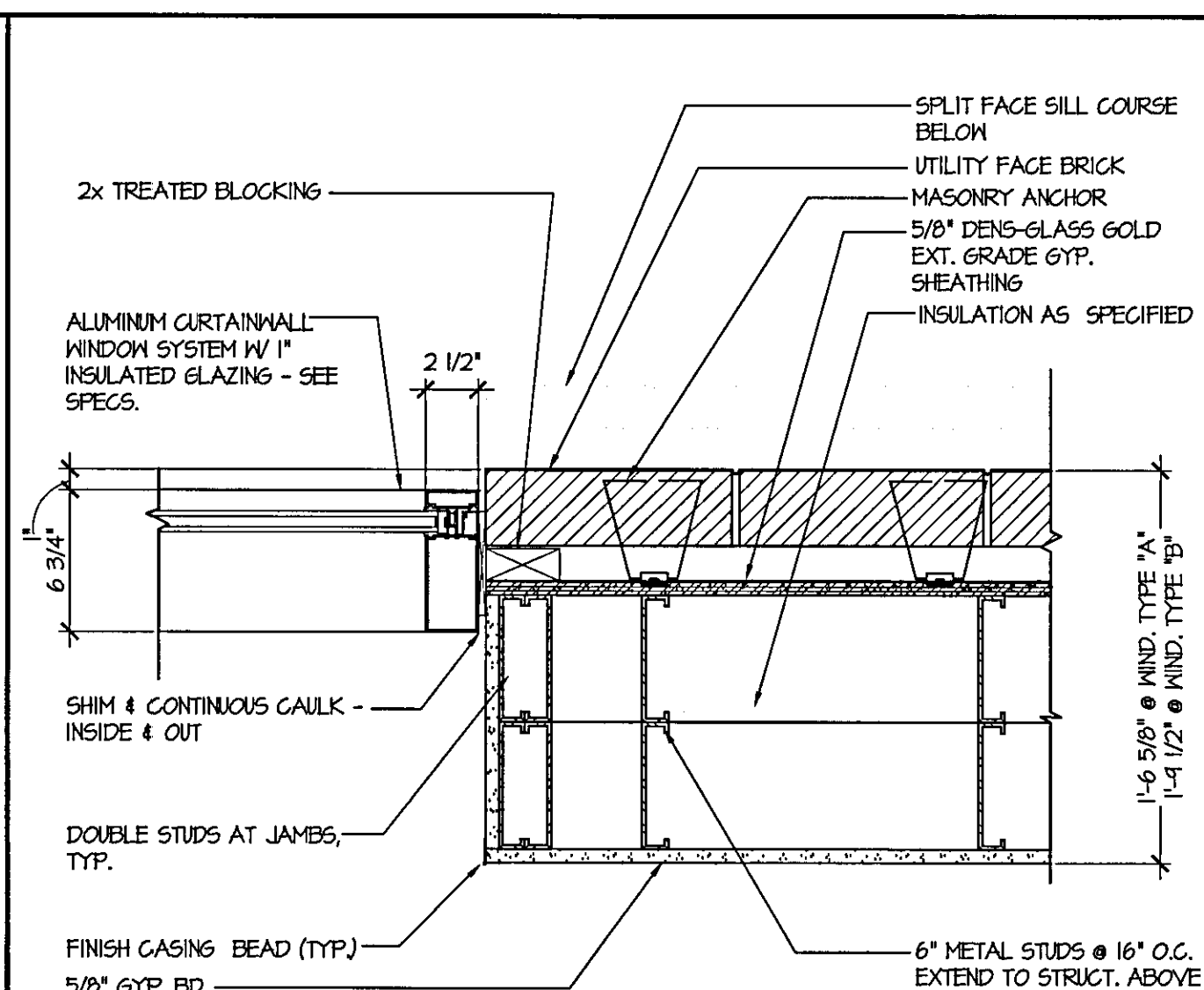
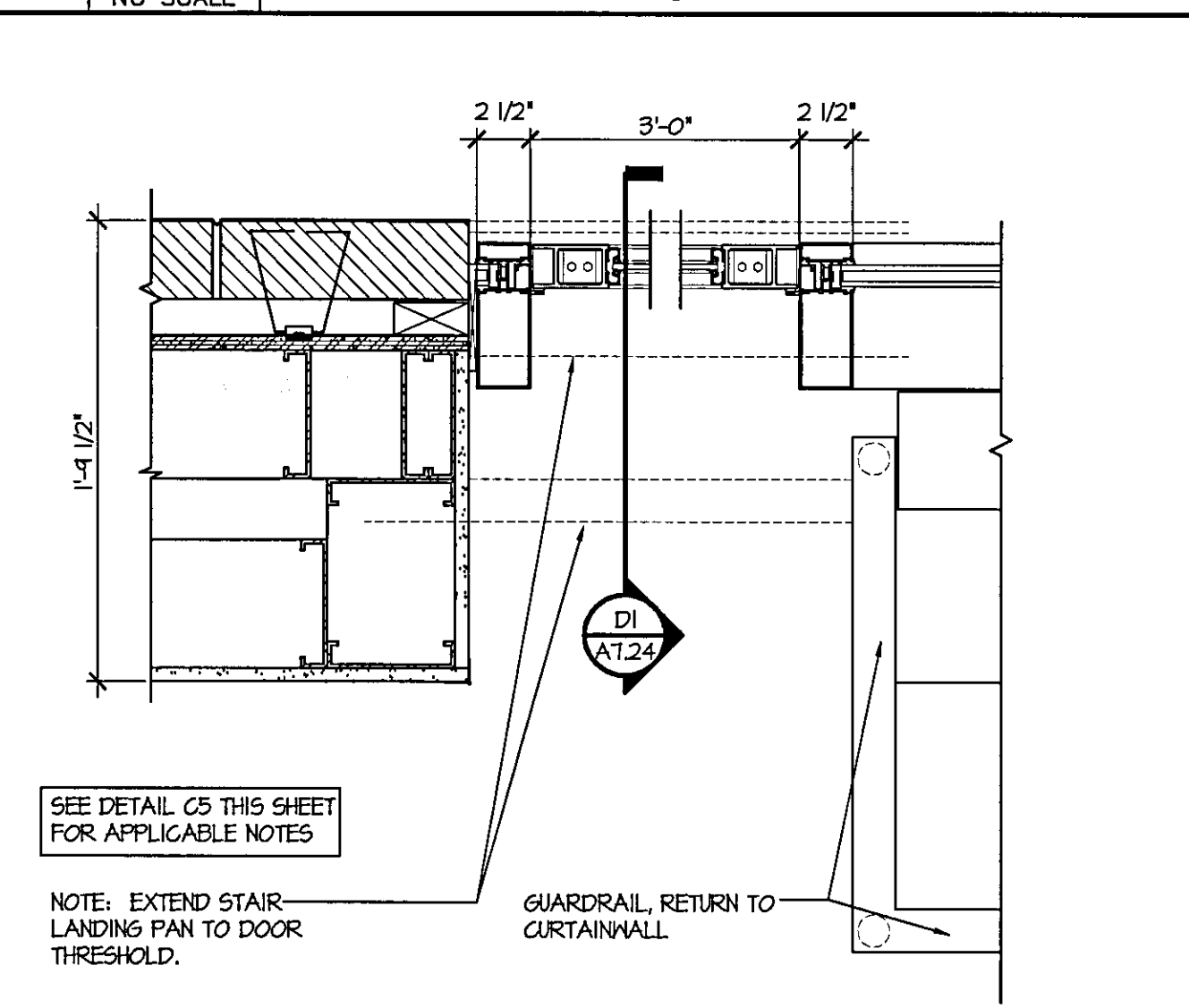
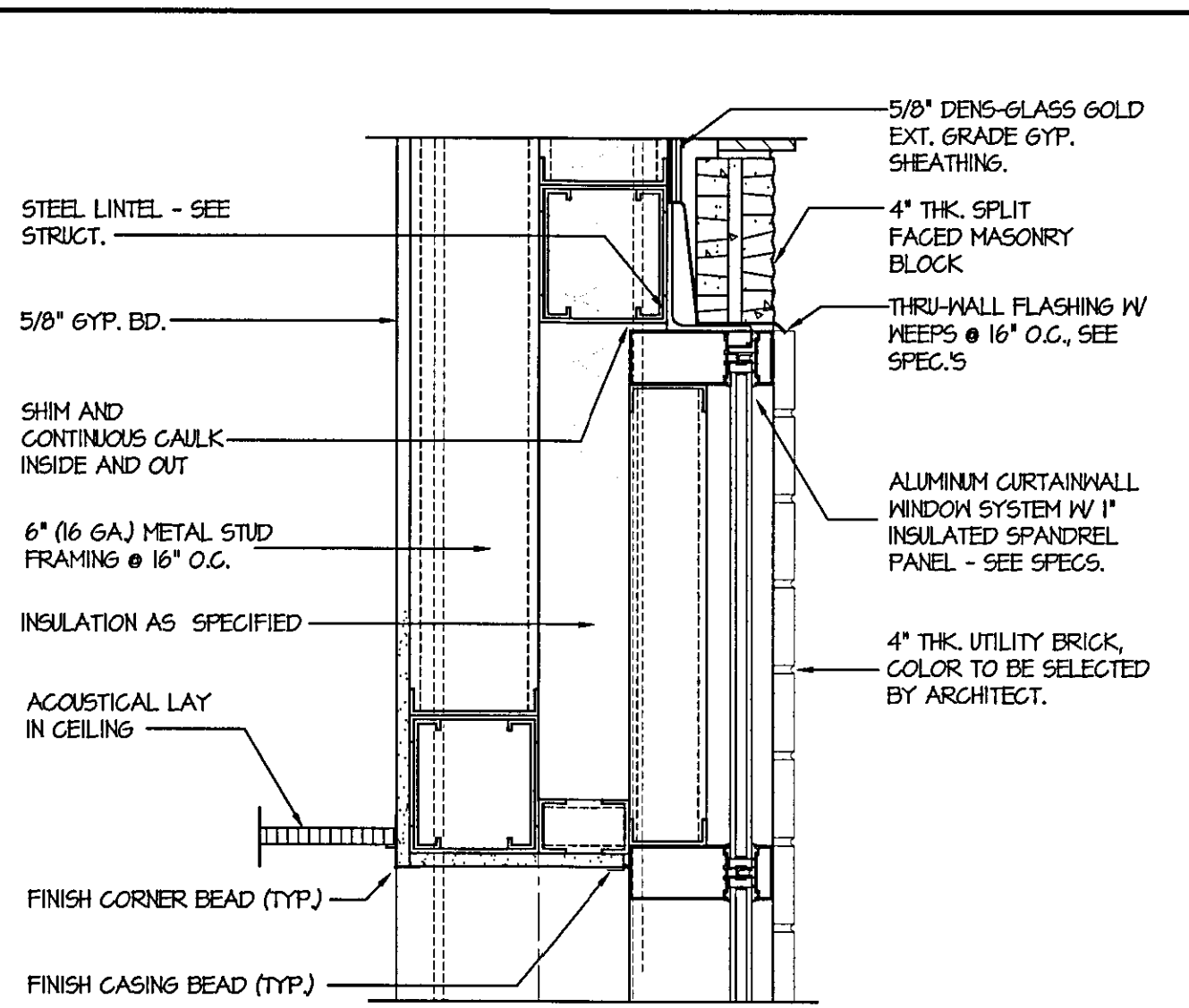
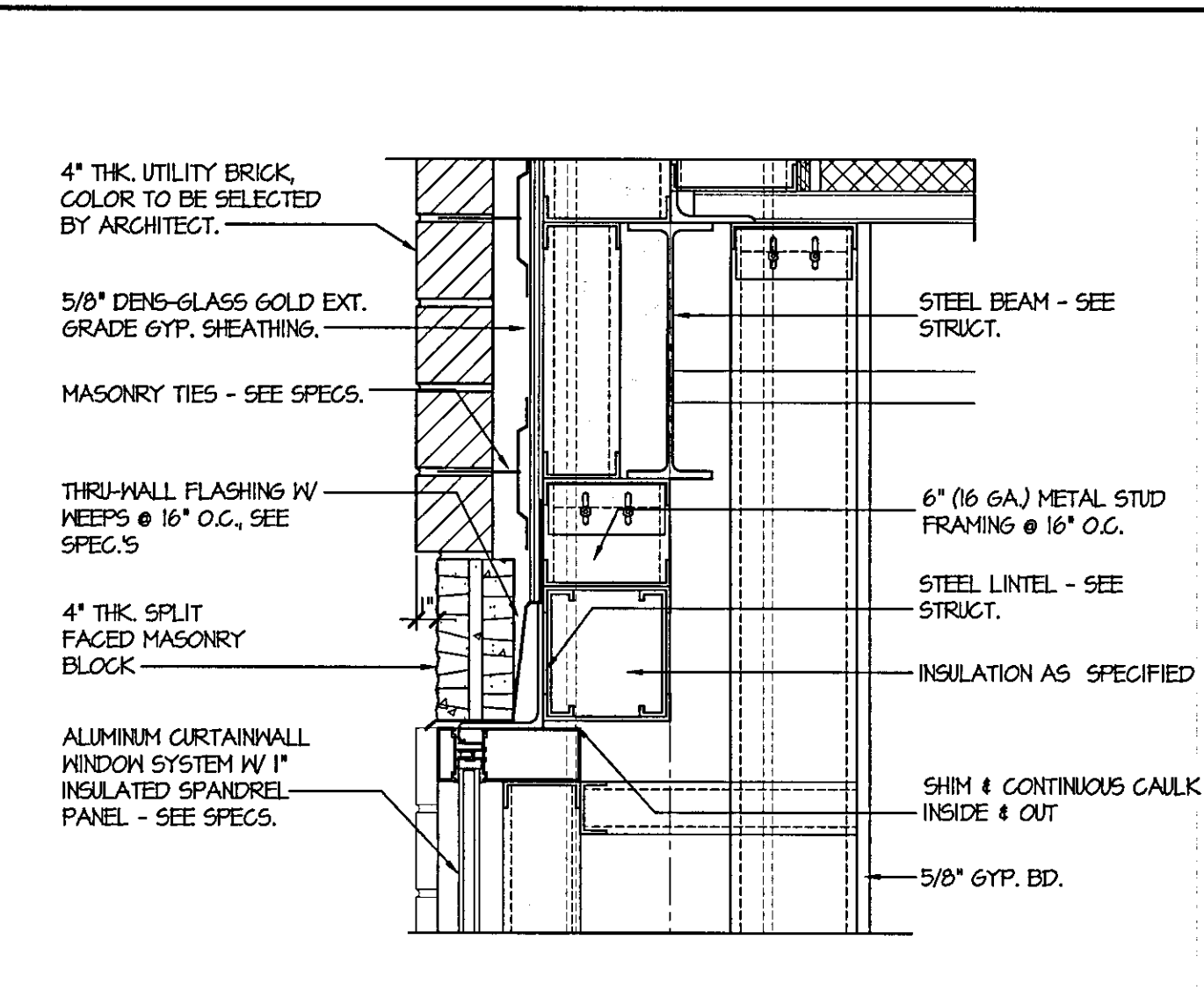
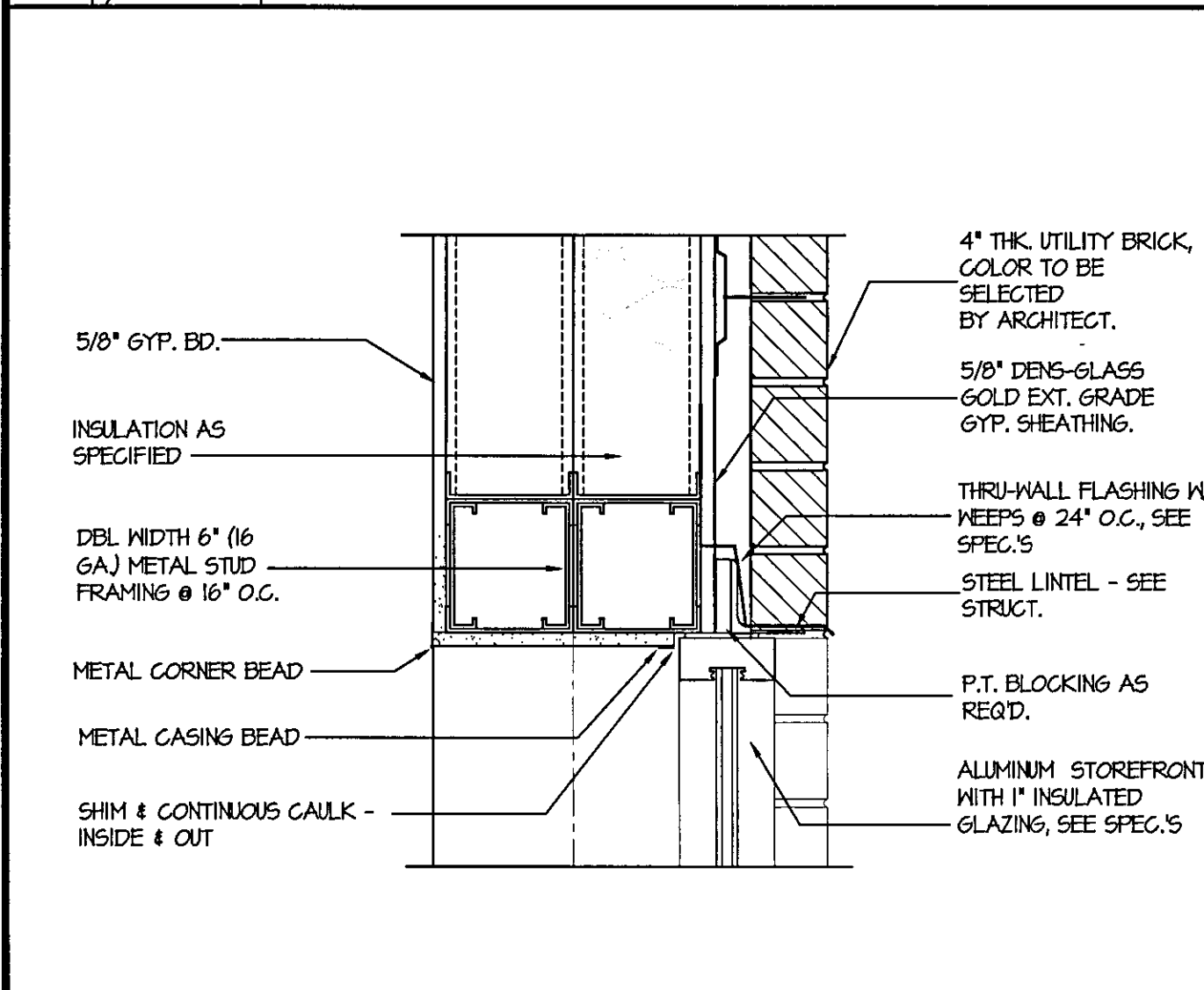
WINDOW TYPE	WINDOW SIZE	FRAME	GLASS	DETAIL			REMARKS
				HEAD	JAMB	SILL	
A	11'-4" H X 26'-0" H	ALUMINUM CURTAINWALL BLACK ANODIZED	63 / 64	C3/A10.20	A4/A10.20 B4/A10.20 A5/A10.20 B5/A10.20 C5/A10.20	A3/A10.20	INTERMEDIATE CONDITION AT BEAM B3/A10.20 SEE STAIR SECTIONS A3/A12.2, A3/A12.3 AND A3/A12.4 FOR ADDITIONAL INFORMATION ON DIFFERENT JAMB CONDITIONS.
B	11'-4" H X 12'-0" H	ALUMINUM CURTAINWALL BLACK ANODIZED	63 / 64	C2/A10.20	C4/A10.20 B4/A10.20 C5/A10.20	B2/A10.20 D1/A12.4	SEE STAIR SECTIONS A3/A12.2 AND A3/A12.4 FOR ADDITIONAL INFORMATION ON DIFFERENT JAMB/SILL CONDITIONS.
C1	3'-4" H X 3'-4" H	ALUMINUM STOREFRONT BLACK ANODIZED	63	D5/A10.21	C5/A10.21	B5/A10.21	-
C2	3'-4" H X 3'-4" H	ALUMINUM STOREFRONT BLACK ANODIZED	63	D1/A10.21	C1/A10.21	B1/A10.21	-
C2	3'-4" H X 3'-4" H	ALUMINUM STOREFRONT BLACK ANODIZED	63	C1/A10.20	B1/A10.20	A1/A10.20	-
D	4'-8" H X 9'-4" H	ALUMINUM STOREFRONT BLACK ANODIZED	63	D3/A10.21	C3/A10.21	B3/A10.21	-
E	4'-8" H X 8'-0" H	ALUMINUM STOREFRONT BLACK ANODIZED	63	D2/A10.21	C2/A10.21	B2/A10.21	-
F	4'-8" H X 8'-0" H	ALUMINUM STOREFRONT BLACK ANODIZED	63	D4/A10.21	C4/A10.21	B4/A10.21	-
E	6'-6" H X 4'-2" H	PRESSED METAL	62	A5/A10.21	A1/A10.21	A3/A10.21	-
F	6'-6" H X 4'-2" H	PRESSED METAL	62	B4/A10.11	A1/A10.11	C5/A10.11	THIS WINDOW HAS A 3 HOUR FIRE SHUTTER ASSEMBLY AS WELL LISTED AS DOOR NO. 103C.

GLAZING LEGEND	
G-1	1/4" CLEAR TEMPERED GLASS
G-2	1/4" WIRID GLASS
G-3	1" INSULATED GLAZING CONSISTING OF THE FOLLOWING OUTBOARD LITE GREY TINTED AND INBOARD CLEAR GLASS. ALL GLASS TO BE TEMPERED.
G-4	1" INSULATED SPANDREL PANEL CONSISTING OF THE FOLLOWING OUTBOARD LITE GREY TINTED, INBOARD LITE SPANDREL GLASS. ALL GLASS TO BE TEMPERED.

GENERAL NOTES:  
1. CONTINUOUS SEALANT AT ALL JOINTS AT FRAMES INSIDE & OUT

D1 1/4" = 1'-0" WINDOW TYPES

D5 NO SCALE WINDOW SCHEDULE



**McMillan Smith & Partners**  
Architects, PLLC

Post Office Box 5331  
Spartanburg, SC 29304  
864.595.5678 Fax 864.542.9451

Spartanburg Technical College Foundation  
CHEROKEE COUNTY TRAINING FACILITY  
BUILDING PACKAGE  
State Project No. H59-N354-GW-B  
Gaffney, South Carolina

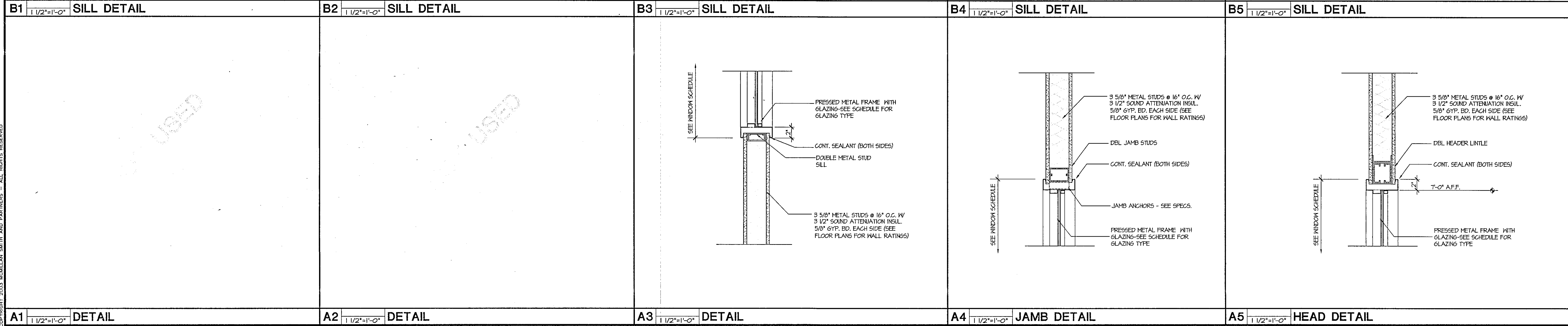
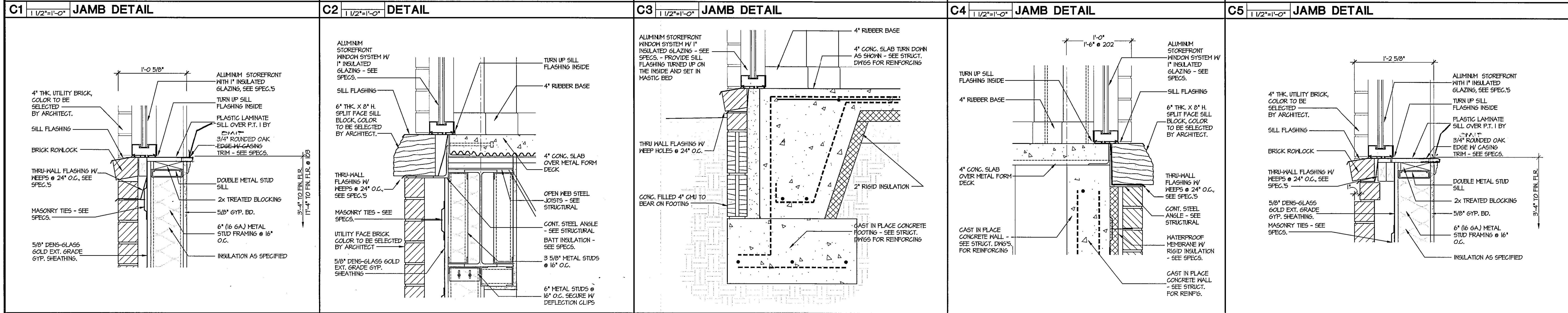
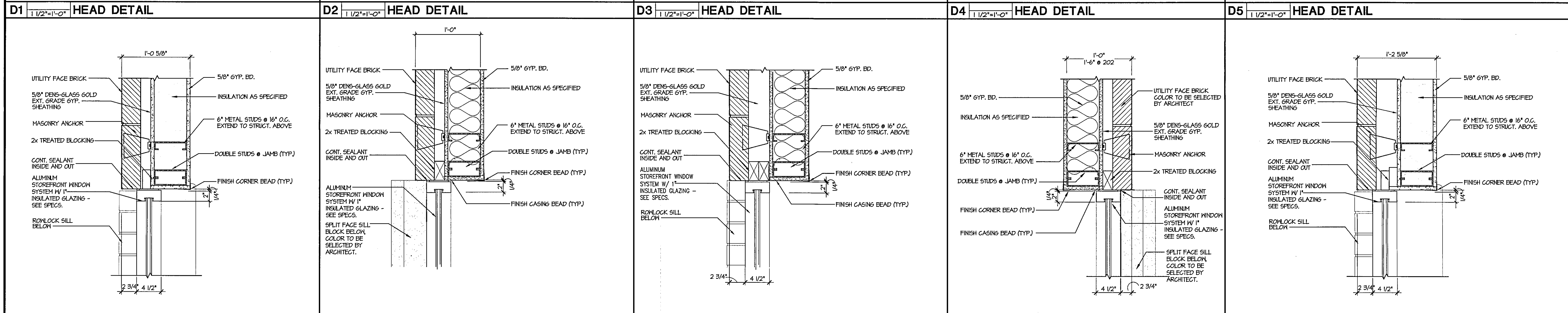
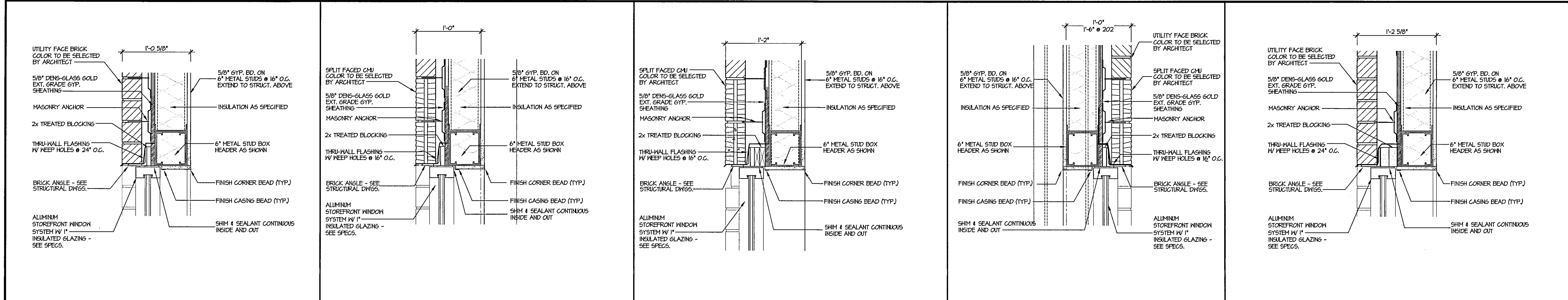
PROJECT NAME:

REVISIONS:  
NO. DATE DESCRIPTION BY

DESIGN PROFESSIONAL IN RESPONSIBLE CHARGE:  
DONNA H. HATTISON, AIA  
03/10/08  
SUBMITTAL  
PRINCIPAL IN CHARGE: DHM  
PROJECT ARCHITECT: DHM  
DRAWN BY: DHM, JSW

SHEET TITLE:  
**WINDOW SCHEDULE,  
& FRAME TYPES,  
& DETAILS**

SHEET NO. **A10.20** PROJ. NO. 05123  
DATE: 03/10/08  
SHT 27 OF 28



PROJECT NAME:  
Spartanburg Technical College Foundation  
CHEROKEE COUNTY TRAINING FACILITY  
BUILDING PACKAGE  
State Project No. H59-N354-GW-B  
Gaffney, South Carolina

REVISIONS:

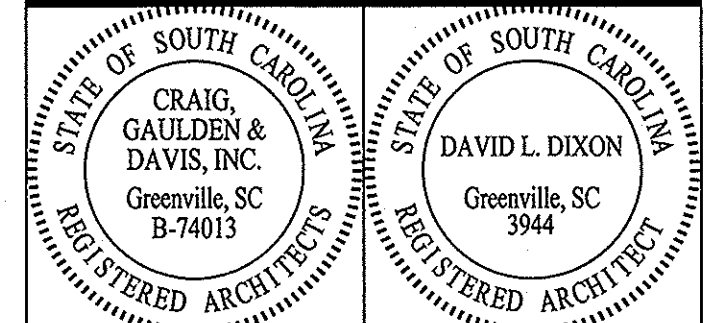
NO.	DATE	DESCRIPTION	BY

DESIGN PROFESSIONAL IN RESPONSIBLE CHARGE:  
DONNA H. WATSON, AIA  
 BID DOCUMENT SUBMITTAL  
 PRINCIPAL IN CHARGE: DHM  
 PROJECT ARCHITECT: DHM  
 DRAWN BY: DHM, JSW

03/10/06

SHEET TITLE:  
**WINDOW DETAILS**

SHEET NO. **A10.21** PROJ. NO. 05123  
 DATE: 03/10/06  
 SHIT 28 OF 28



THIS COPYRIGHTED DOCUMENT IS AN INSTRUMENT OF SERVICE AND SHALL NOT BE REPRODUCED, ALTERED, OR REUSED IN PART OR IN WHOLE WITHOUT WRITTEN PERMISSION FROM THE ARCHITECT. ALL RIGHTS RESERVED.

CONSULTANT

**BUILDING ONE CHEROKEE CAMPUS**

GAFFNEY, SC  
 STATE OF SC PROJECT # H59-9909-GW



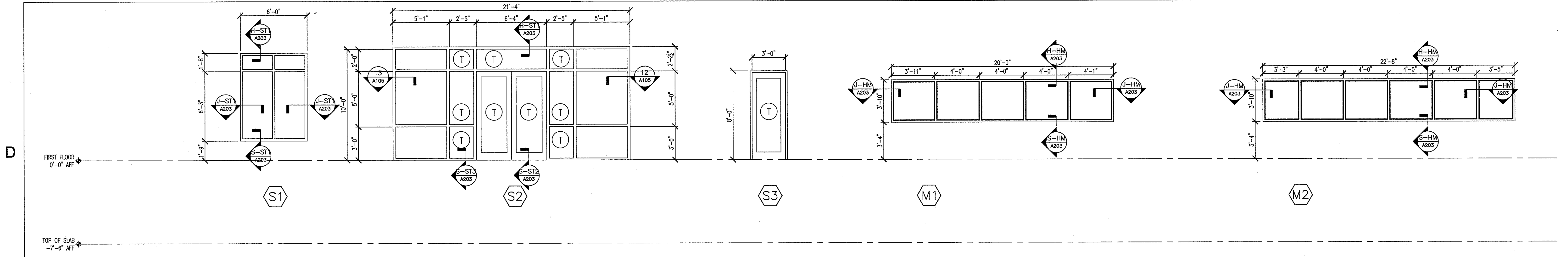
**SPARTANBURG TECHNICAL COLLEGE**  
 SPARTANBURG, SC 29305

DATE	MARK	DESCRIPTION

ISSUE: BID DOCUMENTS  
 DATE: 08/16/06  
 PROJECT NO: 05002  
 DRAWN BY: JDB  
 CHECKED BY: DLD

**WINDOW DETAILS**

**A203**



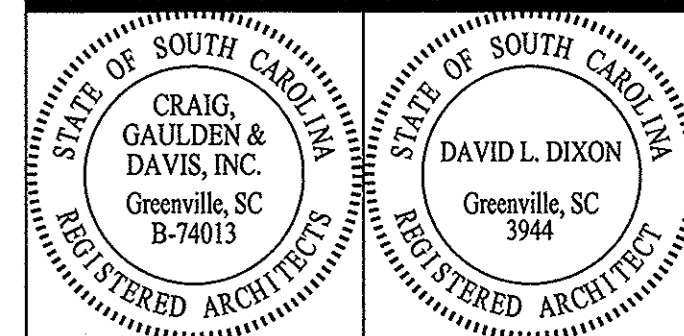
1 ALUMINUM STOREFRONT ELEVATIONS  
 A203 1/4"-1'-0"

2 HOLLOW METAL FRAME WINDOW ELEVATIONS  
 A203 1/4"-1'-0"

	CURTAINWALL	STOREFRONT	HOLLOW METAL	LOUVER	
HEAD	<p>CAULK JOINT            2x 3/8" CONC. ANGLE            3 5/8" MTL STUDS w/ R-13 MIN. BATT INSULATION            STL. TUBE, SEE STRUCT.            3 X 3 STEEL ANGLE @ 16" O.C.            CONT. 3 X 3 STEEL ANGLE            SUSPENDED CEILING            5/8" GYP. BOARD CEILING            ALUMINUM CURTAINWALL SYSTEM            CONT. 3 X 3 STEEL ANGLE            H-C1</p>	<p>SPLIT FACE BLOCK            1/2" PLYWD SHEATHING            VAPOR BARRIER            6" TSB, 16 GAGE RUNNER ATTACHED TO EA. STUD FLANGE &amp; TO BOXED HEADER W/ HILTI X-ZF FASTENERS SP. @ 8". USE 0.145" SHANK DIAM.            LAY-IN CEILING            5/8" GWB            CAULK JOINT            ALUMINUM CURTAINWALL SYSTEM            6" BOXED HEADER MADE FROM (2) 6" CSJ, 16 GAGE &amp; (2) 6" TSB, 16 GAGE MEMBERS. ATTACH USING HILTI X-ZF FASTENERS SP. @ 8". USE 0.145" SHANK DIAM. @ EA. END. ATTACH TO 6" BOXED JAMBS            H-C2</p>	<p>KICKER @ 16" O.C.            3/8" METAL STUD @ 16" O.C.            5/8" GWB            LAY-IN CEILING            WOOD BLOCKING            CAULK JOINT            ALUMINUM STOREFRONT SYSTEM            H-S1</p>	<p>6" MTL STUD HEADER            5/8" GWB            WINDOW HEADER            H-S2</p>	<p>6" TSB, 16 GAGE RUNNER ATTACHED TO EA. STUD FLANGE &amp; TO BOXED HEADER W/ HILTI X-ZF FASTENERS SP. @ 8". USE 0.145" SHANK DIAM.            BRICK HEADER            THR WALL FLASHING            STL. ANGLE, SEE STRUCT.            CAULK JOINT            LOUVER            6" BOXED HEADER MADE FROM (2) 6" CSJ, 16 GAGE &amp; (2) 6" TSB, 16 GAGE MEMBERS. ATTACH USING HILTI X-ZF FASTENERS SP. @ 8". USE 0.145" SHANK DIAM. @ EA. END. ATTACH TO 6" BOXED JAMBS            H-L</p>
JAMB	<p>6" BOXED JAMB MADE FROM (2) 6" CSJ, 16 GAGE &amp; (2) 6" TSB, 16 GAGE MEMBERS. ATTACH USING HILTI X-ZF FASTENERS SP. @ 8". USE 0.145" SHANK DIAM.            VAPOR BARRIER            FACE BRICK            1/2" PLYWD SHEATHING            5/8" GWB            CAULK JOINT            BATT INSULATION R-11 MIN.            ALUMINUM CURTAINWALL SYSTEM            J-C2</p>	<p>6" BOXED JAMB MADE FROM (2) 6" CSJ, 16 GAGE &amp; (2) 6" TSB, 16 GAGE MEMBERS. ATTACH USING HILTI X-ZF FASTENERS SP. @ 8". USE 0.145" SHANK DIAM.            VAPOR BARRIER            FACE BRICK            1/2" PLYWD SHEATHING            5/8" GWB            CAULK JOINT            BATT INSULATION R-11 MIN.            ALUMINUM STOREFRONT SYSTEM            J-S1</p>	<p>3/8" GWB            3-1/2" BOX BEAM            3-3/8" METAL STUDS @ 16" O.C.            SEALANT AND BACKER ROD, EACH SIDE            WOOD BLOCKING            ALUMINUM STOREFRONT SYSTEM            J-S2</p>	<p>3 5/8" MTL STUD            5/8" GWB            WINDOW JAMB            J-HM</p>	<p>6" BOXED JAMB MADE FROM (2) 6" CSJ, 16 GAGE &amp; (2) 6" TSB, 16 GAGE MEMBERS. ATTACH USING HILTI X-ZF FASTENERS SP. @ 8". USE 0.145" SHANK DIAM.            VAPOR BARRIER            FACE BRICK            1/2" PLYWD SHEATHING            5/8" GWB            CAULK JOINT            BATT INSULATION R-11 MIN.            LOUVER            J-L</p>
SILL	<p>ALUMINUM CURTAINWALL SYSTEM            TREAD PLATE            4" CONC. SLAB w/ TURN DOWN FOOTING            VAPOR BARRIER            CAULK JOINT            SLOPED BRICK SILL            3/4" WOOD SILL            5/8" GWB            THRU WALL FLASHING            1/2" PLYWD SHEATHING            VAPOR BARRIER            6" TSB, 16 GAGE RUNNER ATTACHED TO EA. STUD FLANGE &amp; TO BOXED HEADER W/ HILTI X-ZF FASTENERS SP. @ 8". USE 0.145" SHANK DIAM.            6" BOXED HEADER MADE FROM (2) 6" CSJ, 16 GAGE &amp; (2) 6" TSB, 16 GAGE MEMBERS. ATTACH USING HILTI X-ZF FASTENERS SP. @ 8". USE 0.145" SHANK DIAM. @ EA. END. ATTACH TO 6" BOXED JAMBS            S-C1</p>	<p>ALUMINUM CURTAINWALL SYSTEM            CAULK JOINT            SLOPED BRICK SILL            3/4" WOOD SILL            5/8" GWB            THRU WALL FLASHING            1/2" PLYWD SHEATHING            VAPOR BARRIER            6" TSB, 16 GAGE RUNNER ATTACHED TO EA. STUD FLANGE &amp; TO BOXED HEADER W/ HILTI X-ZF FASTENERS SP. @ 8". USE 0.145" SHANK DIAM.            6" BOXED HEADER MADE FROM (2) 6" CSJ, 16 GAGE &amp; (2) 6" TSB, 16 GAGE MEMBERS. ATTACH USING HILTI X-ZF FASTENERS SP. @ 8". USE 0.145" SHANK DIAM. @ EA. END. ATTACH TO 6" BOXED JAMBS            S-C2</p>	<p>ALUMINUM STOREFRONT SYSTEM            CAULK JOINT            3/4" WOOD SILL            5/8" GWB            THRU WALL FLASHING            1/2" PLYWD SHEATHING            VAPOR BARRIER            6" TSB, 16 GAGE RUNNER ATTACHED TO EA. STUD FLANGE &amp; TO BOXED HEADER W/ HILTI X-ZF FASTENERS SP. @ 8". USE 0.145" SHANK DIAM.            6" BOXED HEADER MADE FROM (2) 6" CSJ, 16 GAGE &amp; (2) 6" TSB, 16 GAGE MEMBERS. ATTACH USING HILTI X-ZF FASTENERS SP. @ 8". USE 0.145" SHANK DIAM. @ EA. END. ATTACH TO 6" BOXED JAMBS            S-ST1</p>	<p>ALUMINUM STOREFRONT SYSTEM            CAULK JOINT            3/4" WOOD SILL            5/8" GWB            THRU WALL FLASHING            1/2" PLYWD SHEATHING            VAPOR BARRIER            6" TSB, 16 GAGE RUNNER ATTACHED TO EA. STUD FLANGE &amp; TO BOXED HEADER W/ HILTI X-ZF FASTENERS SP. @ 8". USE 0.145" SHANK DIAM.            6" BOXED HEADER MADE FROM (2) 6" CSJ, 16 GAGE &amp; (2) 6" TSB, 16 GAGE MEMBERS. ATTACH USING HILTI X-ZF FASTENERS SP. @ 8". USE 0.145" SHANK DIAM. @ EA. END. ATTACH TO 6" BOXED JAMBS            S-ST2</p>	<p>6" TSB, 16 GAGE RUNNER ATTACHED TO EA. STUD FLANGE &amp; TO BOXED HEADER W/ HILTI X-ZF FASTENERS SP. @ 8". USE 0.145" SHANK DIAM.            THR WALL FLASHING            CAULK JOINT            FACE BRICK            6" BOXED HEADER MADE FROM (2) 6" CSJ, 16 GAGE &amp; (2) 6" TSB, 16 GAGE MEMBERS. ATTACH USING HILTI X-ZF FASTENERS SP. @ 8". USE 0.145" SHANK DIAM.            LOUVER            WINDOW SILL            5/8" GWB            3 5/8" MTL STUD            S-HM</p>
	<p>ALUMINUM CURTAINWALL SYSTEM            CAULK JOINT            SLOPED BRICK SILL            THR WALL FLASHING            FILL SOLID            S-C3</p>	<p>ALUMINUM STOREFRONT SYSTEM            CAULK JOINT            3/4" WOOD SILL            5/8" GWB            THRU WALL FLASHING            1/2" PLYWD SHEATHING            VAPOR BARRIER            6" TSB, 16 GAGE RUNNER ATTACHED TO EA. STUD FLANGE &amp; TO BOXED HEADER W/ HILTI X-ZF FASTENERS SP. @ 8". USE 0.145" SHANK DIAM.            6" BOXED HEADER MADE FROM (2) 6" CSJ, 16 GAGE &amp; (2) 6" TSB, 16 GAGE MEMBERS. ATTACH USING HILTI X-ZF FASTENERS SP. @ 8". USE 0.145" SHANK DIAM. @ EA. END. ATTACH TO 6" BOXED JAMBS            S-ST3</p>	<p>ALUMINUM STOREFRONT SYSTEM            CAULK JOINT            3/4" WOOD SILL            5/8" GWB            THRU WALL FLASHING            1/2" PLYWD SHEATHING            VAPOR BARRIER            6" TSB, 16 GAGE RUNNER ATTACHED TO EA. STUD FLANGE &amp; TO BOXED HEADER W/ HILTI X-ZF FASTENERS SP. @ 8". USE 0.145" SHANK DIAM.            6" BOXED HEADER MADE FROM (2) 6" CSJ, 16 GAGE &amp; (2) 6" TSB, 16 GAGE MEMBERS. ATTACH USING HILTI X-ZF FASTENERS SP. @ 8". USE 0.145" SHANK DIAM. @ EA. END. ATTACH TO 6" BOXED JAMBS            S-ST3</p>	<p>6" TSB, 16 GAGE RUNNER ATTACHED TO EA. STUD FLANGE &amp; TO BOXED HEADER W/ HILTI X-ZF FASTENERS SP. @ 8". USE 0.145" SHANK DIAM.            THR WALL FLASHING            CAULK JOINT            FACE BRICK            6" BOXED HEADER MADE FROM (2) 6" CSJ, 16 GAGE &amp; (2) 6" TSB, 16 GAGE MEMBERS. ATTACH USING HILTI X-ZF FASTENERS SP. @ 8". USE 0.145" SHANK DIAM.            LOUVER            WINDOW SILL            5/8" GWB            3 5/8" MTL STUD            S-L</p>	

4 WINDOW HEAD, JAMB, AND SILL DETAILS  
 A203 1/2"-1'-0"

A204 WINDOW DETAILS.DWG TREVOR JORDAN/November 30, 2007



THIS COPYRIGHTED DOCUMENT IS AN INSTRUMENT OF SERVICE AND SHALL NOT BE REPRODUCED, ALTERED, OR REUSED IN PART OR IN WHOLE WITHOUT WRITTEN PERMISSION FROM THE ARCHITECT. ALL RIGHTS RESERVED.

CONSULTANT

**BUILDING ONE  
 CHEROKEE  
 CAMPUS**

GAFFNEY, SC  
 STATE OF SC PROJECT # H59-9909-GW



**SPARTANBURG  
 TECHNICAL  
 COLLEGE**  
 SPARTANBURG, SC 29305

DATE	MARK	DESCRIPTION

ISSUE: BID DOCUMENTS  
 DATE: 08/16/06  
 PROJECT NO: 05002  
 DRAWN BY: JDB  
 CHECKED BY: DLD

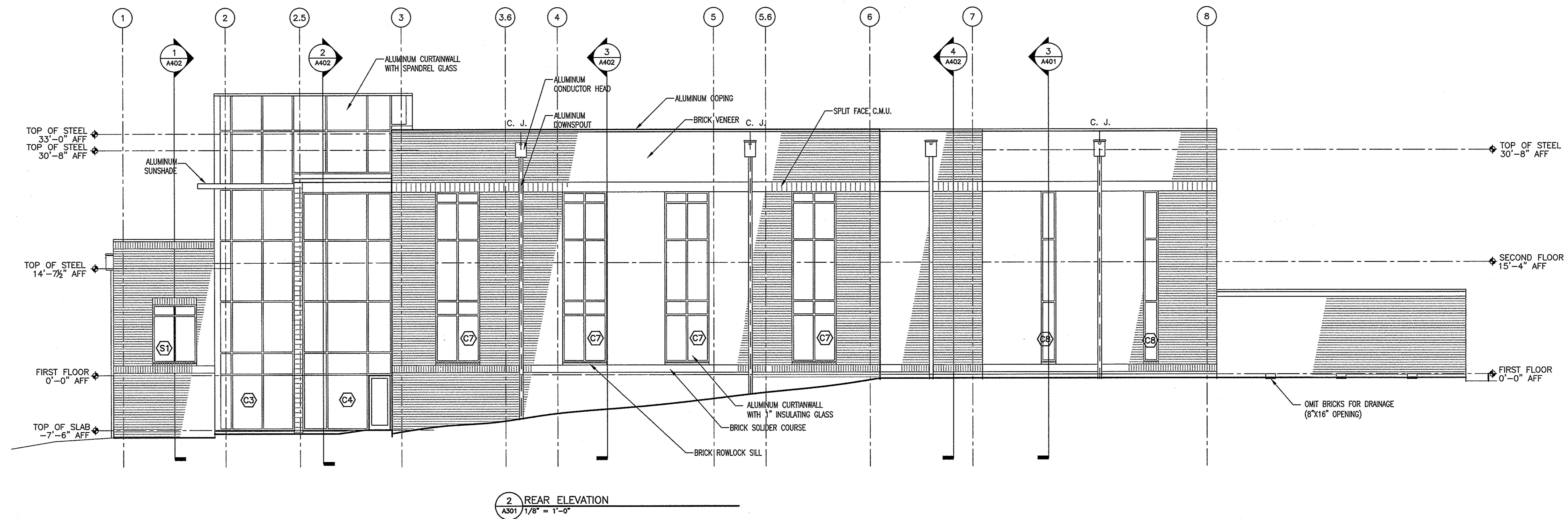
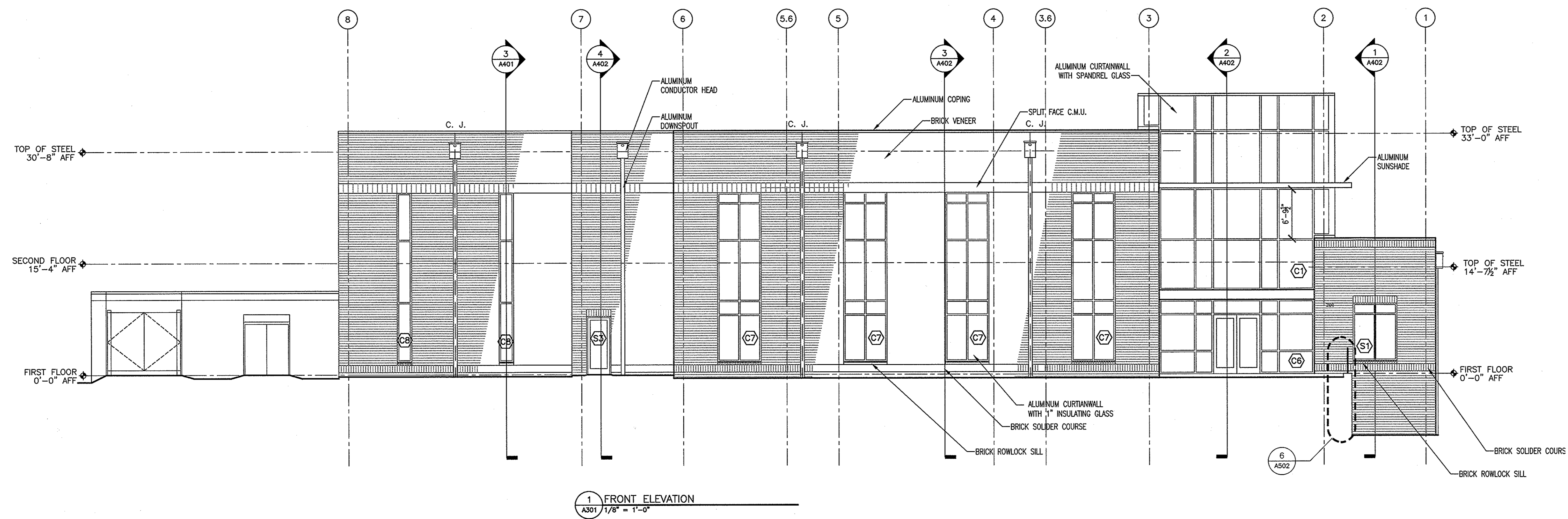
**BUILDING  
 ELEVATIONS  
 A301**

D

C

B

A



1

2

3

4

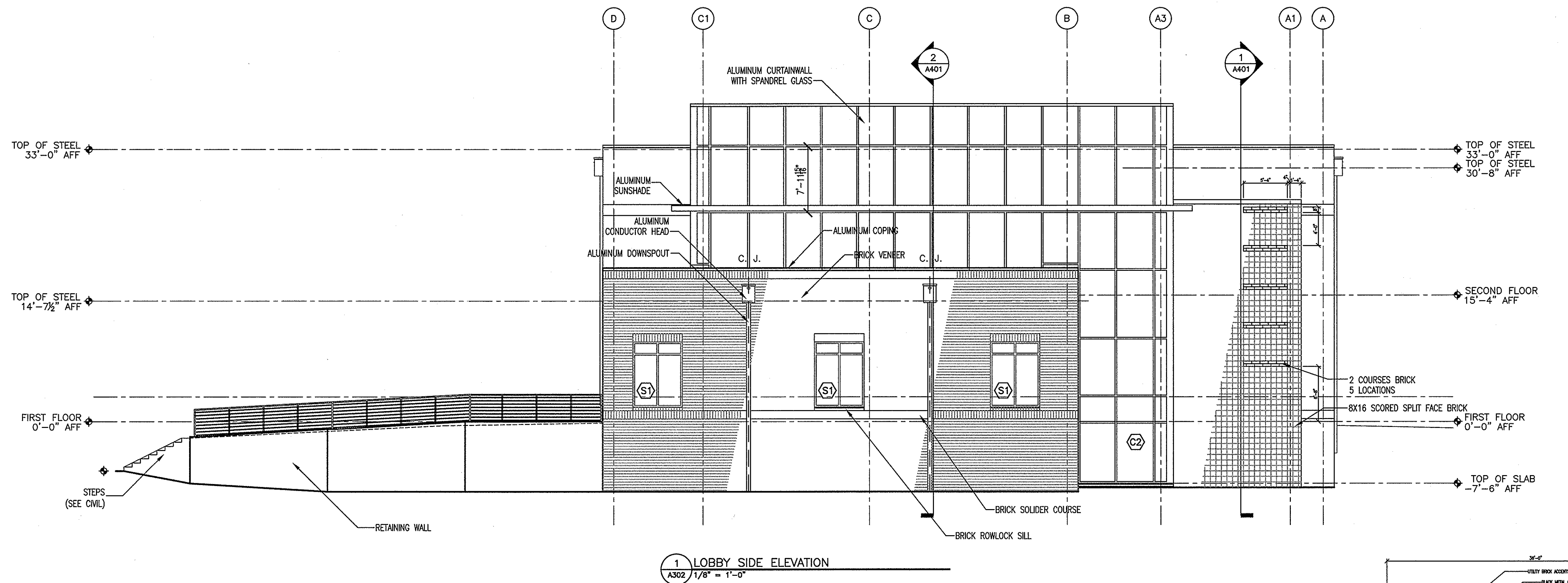
5

D

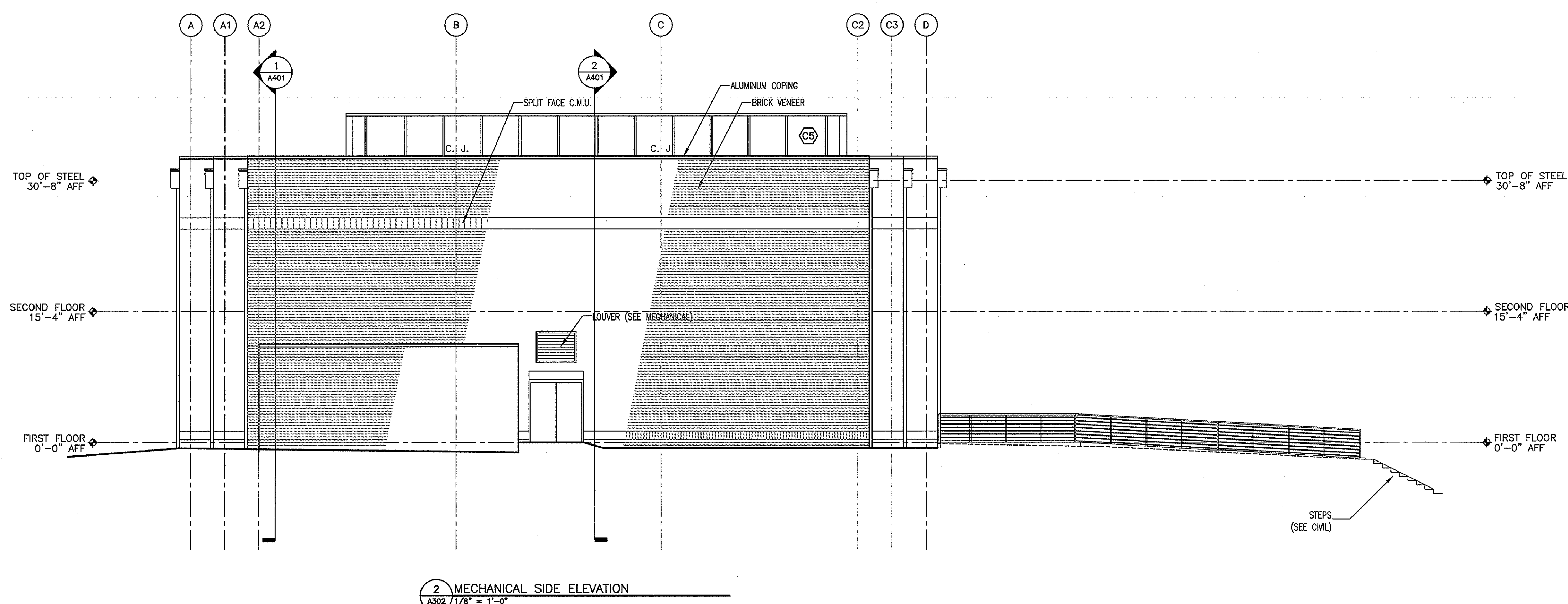
C

B

A



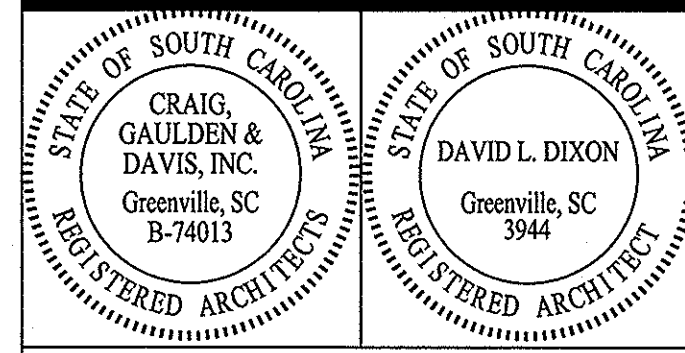
1 LOBBY SIDE ELEVATION  
A302 1/8" = 1'-0"



2 MECHANICAL SIDE ELEVATION  
A302 1/8" = 1'-0"

**CRAIG GAULDEN DAVIS**  
architecture  
planning  
interiors

18 Washington Park  
Greenville, SC 29601  
P.O. Box 2527  
Greenville, SC 29602  
Phone (864) 242-0761  
Fax (864) 233-2319  
E-mail cgd@cgdarh.com



THIS COPYRIGHTED DOCUMENT IS AN INSTRUMENT OF SERVICE AND SHALL NOT BE REPRODUCED, ALTERED, OR REUSED IN PART OR IN WHOLE WITHOUT WRITTEN PERMISSION FROM THE ARCHITECT. ALL RIGHTS RESERVED.

CONSULTANT

**BUILDING ONE  
CHEROKEE  
CAMPUS**

GAFFNEY, SC  
STATE OF SC PROJECT # H59-9909-GW



DATE	MARK	DESCRIPTION

ISSUE: BID DOCUMENTS  
DATE: 08/16/06  
PROJECT NO: 05002  
DRAWN BY: JDB  
CHECKED BY: DLD

**BUILDING  
ELEVATIONS  
A302**

A302 BUILDING ELEVATIONS.DWG TREVOR JORDAN November 30, 2007

1

2

3

4

5